



Thermo Scientific Laboratory Consumables Catalog

Cell Culture | Diagnostics
Environmental Sample Containers
Filtration | General Labware | IVF
Microplates for Drug Discovery | Packaging
Sample Collection and Processing
Sample Storage | Vaccines & Biologics

Quality, Choice
and Innovation
for your applications

Thermo
SCIENTIFIC

vaccines & biologics

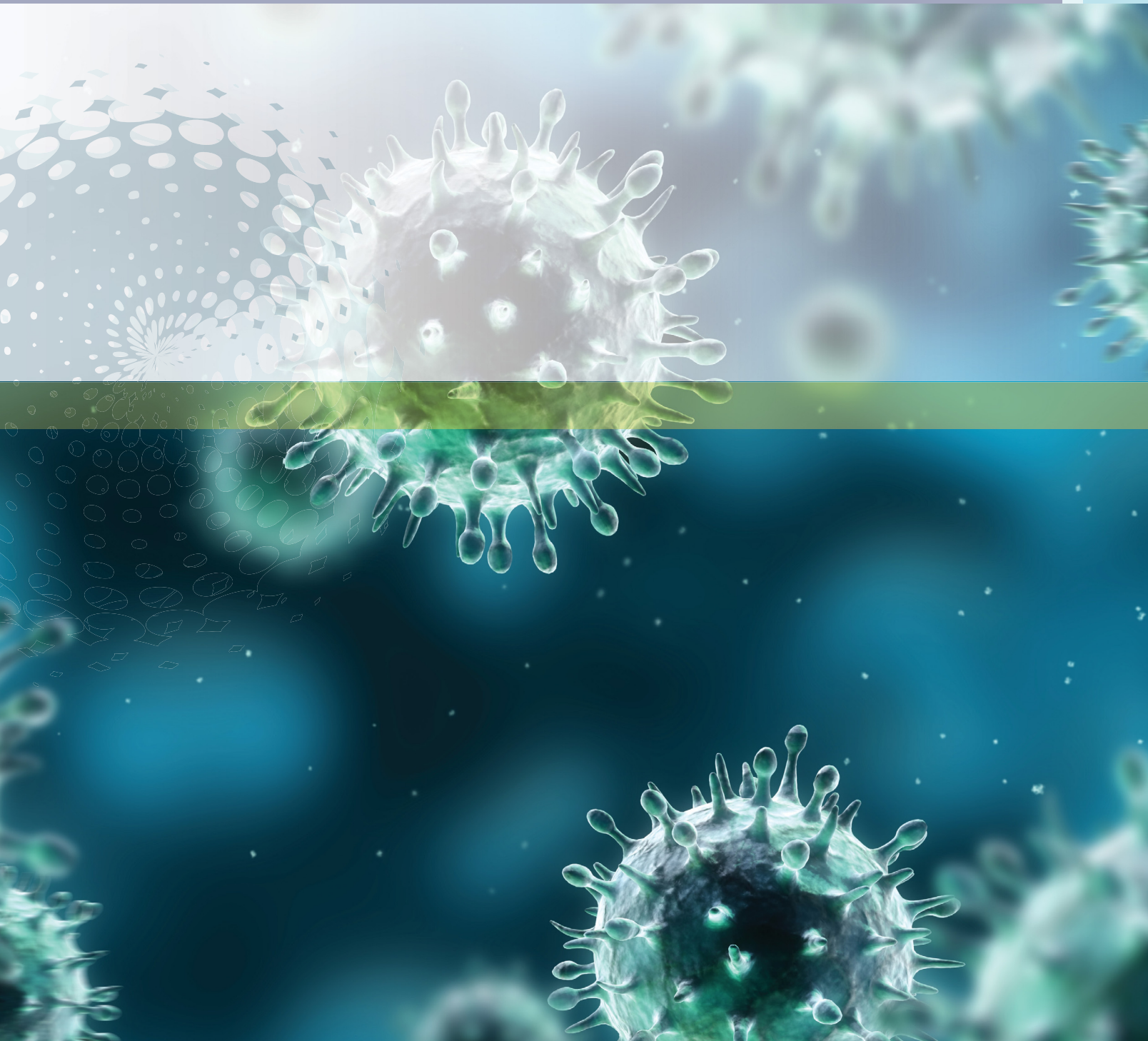
Process solutions at every scale.

Biopharmaceutical companies worldwide face enormous regulatory pressures throughout their production workflow. And as new drugs, vaccines and other biologics are approved, the need becomes critical to standardize on consumables that offer uncompromised integrity.

That's where we come in. From upstream cell culture production and harvest through the storage of high-value bulk intermediates and active pharmaceutical ingredients—Thermo Scientific bioprocessing products deliver proven solutions at every scale. With a wealth of experience and knowledge behind every product, you are ensured that your bioproduction process performs at its best.

Thermo Scientific Nunc and Nalgene products are specifically designed to deliver proven performance with innovative, efficient and highly-effective upstream or downstream applications. From a single source, you can optimize production, improve process efficiency, increase flexibility and fast-track product development and market introduction.

- ▶ For more information about Thermo Scientific bioproduction solutions visit:
www.thermoscientific.com/bioproduction



optimize
production

► Vaccines & Biologics Table of Contents

Thermo Scientific Products	Page	Thermo Scientific Products	Page
Nalgene PETG Sterile Media Bottles with Closures	V4	Nunc Cell Factory Incubators	V52
Nalgene Certified Clean Containers	V5	Nunc Cell Factory Racks and Carts	V52
Heat-Shrink Bands for Nalgene PETG Sterile Media Bottles	V6	Nunc TufRol Roller Bottles	V53
Nalgene Low Particulate/Low Metals Bottles	V7	Nunc InVitro Roller Bottles	V54
Nalgene Narrow-Mouth Bottles	V8	Nalgene Sterile Single-Use Erlenmeyer Flasks	V56
Nalgene Wide-Mouth Bottles	V10	Nalgene Vented Closures for Sterile Single-Use Erlenmeyer Flasks	V57
Nalgene Wide-Mouth EP Tox/TCLP Bottle	V11	Nalgene Fernbach Culture Flask	V57
Nalgene Biotainer Bottles	V13	Nalgene Magnetic Culture Vessel	V58
Nalgene Biotainer Replacement Closures	V13	Nalgene Culture Vessel with Ports	V58
Nalgene InVitro Biotainer Bottles and Carboys	V14	Nalgene Probe Adapter Closure	V59
Nalgene Biotainer Bottles	V15	Nalgene Closures with Barbed Bulkhead Fittings	V59
Nalgene 2- and 3- Ported Closures for Biotainer Bottles	V15	Nalgene Magnetic Carboy Stirrer	V60
Nalgene Autoclavable Carboys with Handles	V16	Nalgene Autoclavable Septum Closures	V60
Nalgene Heavy Duty Vacuum Carboys	V17	Nalgene Top Works Fluid Transfer Systems	V63
Nalgene Round Clearboys	V18	Nalgene Pharma-Grade Platinum-Cured Silicone Tubing	V64
Nalgene Validation Bottles	V19	Nalgene Pharma-Grade Platinum-Cured Silicone Tubing for Peristaltic Pumps	V65
Nalgene Round Carboys	V20	Nalgene Braided Platinum-Cured Silicone Tubing	V66
Nalgene Fluorinated Carboys	V20	Nalgene Quick-Filling/Venting Closures	V68
Nalgene Amber Carboy	V21	Nalgene Replacement Coupling Inserts for Quick Filling/Venting Closure	V69
Nalgene Single-Use Carboy	V23	Nalgene Filling/Venting Closures	V70
Nalgene Handle for Single-Use Carboy	V23	Nalgene Barbed Bulkhead Fittings	V70
Nalgene Autoclavable Wide-Mouth Carboys with Handles	V24	Nalgene Vacuum Check Valve and Positive Connector	V71
Nalgene Wide-Mouth Carboys with Handles	V25	Nalgene T-Type Tubing Connectors	V72
Nalgene Sanitary Carboys	V26	Nalgene Y-Type Tubing Connectors	V72
Nalgene Autoclavable Carboys with Sanitary Flange	V27	Nalgene Pinch Clamp	V73
Nalgene End Caps	V28	Nalgene One-Way Stopcocks	V74
Nalgene Sanitary Gaskets for Thermo Scientific Nalgene Carboys	V29	Nalgene Three-Way Stopcocks	V74
Nalgene True Union Clamps	V30	Nalgene Quick Disconnects	V75
Nalgene Heavy Duty Clamps	V30	Nalgene Valved Quick Disconnects	V75
Nalgene Autoclavable Rectangular Carboys	V31	Nalgene 3/4 in. Mini Hose Barb Connectors	V76
Nalgene Rectangular Clearboys	V31	Nalgene 1 in. Sanitary Hose Barb Connector	V76
Nalgene Rectangular Carboys	V32	Nalgene Cylindrical Tank with Cover	V77
Nalgene Heavy-Duty Rectangular Carboys	V32	Nalgene Lightweight Graduated Cylindrical Tank with Cover	V78
Nalgene Heavy-Duty Wide Mouth Jug	V33	Nalgene Lightweight Cylindrical Tank with Cover and Spigot	V79
Nalgene Jerricans	V33	Nalgene Heavy Duty Cylindrical Tanks with Cover	V80
Nalgene 13 L Jerrican	V34	Nalgene Heavy Duty Cylindrical Tanks with Spigot	V81
Nalgene Fluorinated Jerricans	V35	Nalgene Tank Liners	V82
Nalgene Replacement Closures for Large Carboys and Bottles	V36	Nalgene Rectangular Tank with Cover	V83
Class 100/10 Particle-Certified Glassware	V37	Nalgene Heavy Duty Rectangular Tank with Cover	V83
Class 100/10 Particle-Certified Bottles	V38	Nalgene Closed-Dome Tanks	V84
Total Organic Carbon Certified Vials	V39	Nalgene Closed-Dome Tank Closure with Mixer Support Assembly	V84
Total Organic Carbon Water	V40	Nalgene Spigots for Storage Tanks	V85
Depyrogenated Glassware	V41	Nalgene Centrifuge Bottles	V86
Depyrogenated Sterile Vials	V42	Nalgene Teflon® FEP Centrifuge Bottle	V90
Silanized Glassware Products	V43	Nalgene Centrifuge Bottles	V90
Nunc EasyFill Cell Factory Systems	V44	Nalgene Centrifuge Bottle Adapter	V91
Nunc EasyFill Cell Factory Accessories	V45	Nalgene Sealing Cap Assembly	V91
Nunc Cell Factory Systems	V46	Nalgene Spherical-Bottom Centrifuge Bottle	V92
Nunc Cell Factory Systems with Active Gassing	V47	Nalgene Spherical-Bottom Centrifuge Bottle Adapter	V92
Nunc Cell Factory Accessories	V48	Nalgene Conical-Bottom Centrifuge Bottle	V93
Nunc Cell Factory Start-Up Kit	V49	Nalgene Conical-Bottom Centrifuge Bottle Adapter	V94
Nunc Cell Factory Hand Manipulator	V49	Nalgene 1 L Super Speed Centrifuge Bottles with Sealing Closure	V96
Nunc Automatic Cell Factory Manipulator (ACFM)	V50	Nalgene 2 L Bio Bottle with Sealing Closure	V97
Nunc Cell Factory Shaker System	V51	Nalgene Bottle Low & High Speed Selector Guide	V98

▶ Thermo Scientific Nalgene PETG Sterile Media Bottles with Closures

polyethylene terephthalate copolyester, white high-density polyethylene closures



Nalgene™ PETG Media Bottles are heavy-walled and durable, ideal for storage and sampling of active pharmaceutical ingredients and bulk intermediates.

Well suited for the preparation and containment of buffers, culture media and general laboratory solutions.

PETG's enhanced material properties feature low permeability to CO₂/O₂ and provide longer-term storage of pH-sensitive contents.

details

- Made from durable, break-resistant PETG
- Suitable for frozen storage down to -40°C
- Leakproof† bottles and closures are provided sterile and non-pyrogenic; eliminates costly washing, depyrogenation and autoclaving steps
- Available in low particulate format
- Supported by extensive validation documentation

Ordering Information: Packed in shrink-wrapped trays.

Compliance: USP Class VI, non-cytotoxic, USP <661>, non-pyrogenic, FDA 21CFR 177.1315.

† The term "leakproof" applies to Thermo Scientific Nalgene products that meet the following criteria: a) Bottle/flask/funnel closure systems with closures smaller than 100 mm, after they are filled with water, inverted, withstand air pressure of 2 psig for 2 minutes, and no water escapes;. b) Bottle/funnel/flask closure systems of larger than 100 mm after they are filled with water, inverted for 15 minutes, and no water escapes. Note: these tests, using other liquids, may not yield the same results. To ensure safe usage, customers are advised to test Thermo Scientific Nalgene bottles and closures under conditions of their planned applications. Thermo Scientific Nalgene products are leakproof at ambient temperature and pressure when used with their Nalgene closures.

Nalgene Media Bottles with Closures

Cat. No.	Nominal Capacity, mL (oz.)	Closure Size, mm	O.D., mm	Height with Closure, mm	No. per Pack	No. per Case
2019-0030	30 (1)	20	38 Square	64	24	96
2019-0060	60 (2)	24	41 Square	82	24	96
2019-0125	125 (4)	38-430	52 Square	108	24	48
2019-0250	250 (8)	38-430	59 Square	144	24	48
2019-0500	500 (16)	38-430	73 Square	178	12	24
2019-1000	1000 (32)	38-430	92 Square	219	12	24
2019-2000	2000 (64)	53B	116 Square	271	6	12

► Thermo Scientific Nalgene Certified Clean Containers

polyethylene terephthalate copolyester, high-density polyethylene closures



Nalgene™ PETG Certified Clean Containers are specifically designed for cleanroom applications.

Ideal for processing and storing critical reagents and bulk intermediates such as vaccines and protein therapeutics. The bottles are lot to lot tested and certified using liquid particulate count analysis for particulate control as specified in the following international compendia: USP <788>, EP 2.9.19 and JP 14th edition Part 1, Section 24.

details

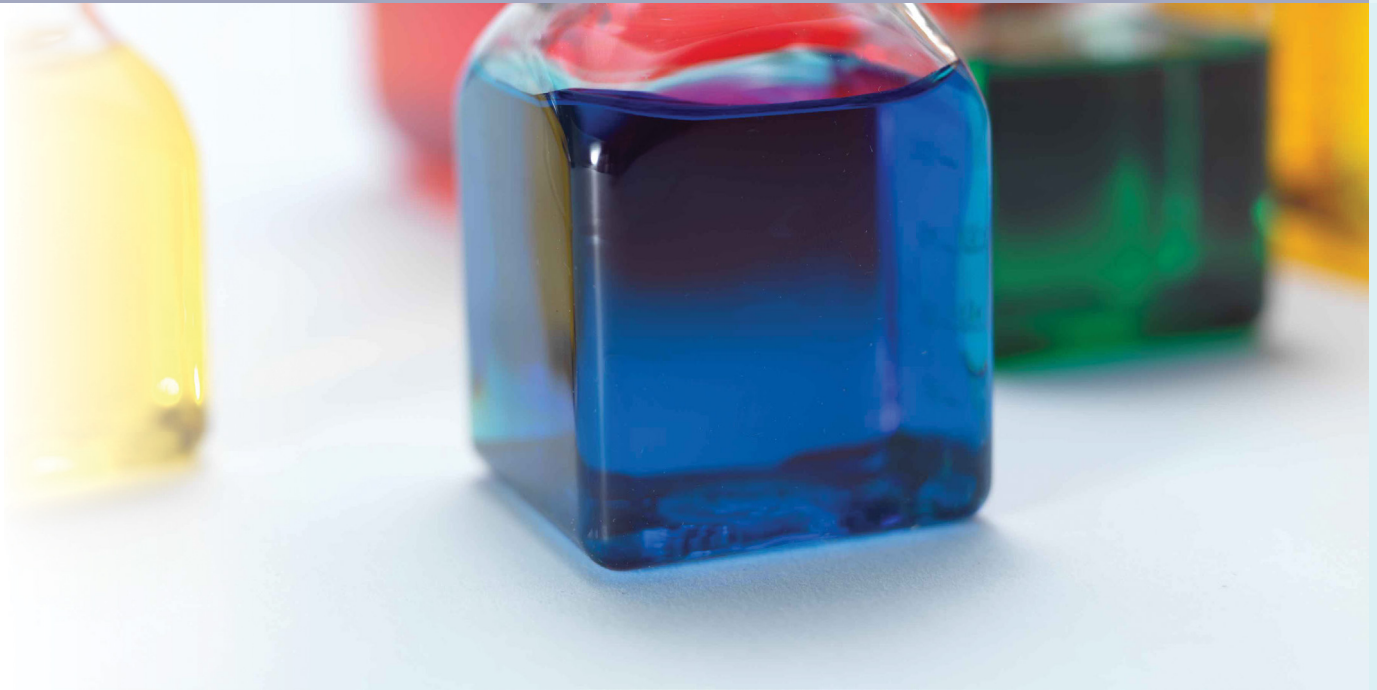
- Manufactured in a ISO 14644-1 Class 7 certified clean room
- Comprised of resins that are free of animal derived components
- Sterile, tamper-resistant seal ensures product integrity prior to use
- Supported by extensive validation documentation
- Certified sterile and non-pyrogenic, eliminating costly cleaning and associated validations

Certifications: USP <788>, EP 2.9.19 and JP 14th edition Part 1, Section 24.

Compliance: USP Class VI, non-cytotoxic, USP <661>, non-pyrogenic, FDA 21CFR 177.1315.

Nalgene Certified Clean Containers

Cat. No.	Nominal Capacity, mL (oz.)	Closure Size, mm	O.D., mm	Height with Closure, mm	No. per Pack	No. per Case
382019-0030	30 (1)	20	38 Square	64	6	72
382019-0060	60 (2)	24	41 Square	82	6	72
382019-0125	125 (4)	38-430	52 Square	108	6	48
382019-0250	250 (8)	38-430	59 Square	144	6	48
382019-0500	500 (16)	38-430	73 Square	178	4	24
382019-1000	1000 (32)	38-430	92 Square	219	4	24
382019-2000	2000 (64)	53B	116 Square	271	1	12



► Heat-Shrink Bands for Thermo Scientific Nalgene PETG Sterile Media Bottles polyvinyl chloride



The heat-shrink bands found on Nalgene™ Sterile PETG Media Bottles provide a tamper-resistant seal to ensure the integrity of the bottle contents.

Simply apply the recommended application torque for Nalgene closures, and slide the heat-shrink band over the closure and bottle neck; heat the band to shrink and secure contents.

details

- Gamma stable and include a perforated “tear strip” feature for easy removal
- Available in 4 sizes to mate with Nalgene PETG Media Bottles
- Packed 1,000 per case (two zipper bags of 500 each)

Heat-Shrink Bands for Nalgene Sterile Media Bottles

Cat. No.	Description	Closure Size, mm	No. per Pack	No. per Case
312160-0200	Fits 30 mL Square PETG Media Bottle	20-415	500	1000
312160-0240	Fits 60 mL Square PETG Media Bottle	24-415	500	1000
312160-0384	Fits 125 - 1000 mL Square PETG Media Bottles	38-430	500	1000
312160-0530	Fits 2000 mL Square PETG Media Bottle	53B	500	1000

► Thermo Scientific Nalgene Low Particulate/Low Metals Bottles

Teflon® FEP, Tefzel™ ETFE closure



Nalgene™ Low Particulate/Low Metals Teflon® FEP Bottles feature a narrow mouth and certification to contain less than 20 particles per mL at 0.3 µm and greater

Metals certified to micrograms per liter (ppb) levels. Each bottle is double bagged under Class 10 laminar flow hoods inside a Class 100 clean room. Excellent for storing high purity chemicals. Product includes a certificate of quality that assures the product has been tested and accepted in accordance with specifications.

details

- Certified to particulate and trace metals levels
- Linerless caps provide the ultimate in leakproof[†] protection without the use of liner that can wrinkle, cause leaks, or contaminate your reagents
- Exhibits flexibility, impact resistance and excellent visibility of contents for a wide variety of uses in the lab
- Excellent chemical resistance almost any lab chemical
- Non-sterile
- Metals certified to microliter (ppb) levels <0.20Hg, <0.5 Be, <1.0 As, Cd, Pb, <2.0 Sb, Se, <5.0 Ag, Co, Cr, Cu, Mn, Tl, V, <10 Ba, Ni, Zn, <50 Mg, <75 Al, <100 Ca, Fe, K, Na.
- Autoclavable/Translucent/Leakproof[†]

Includes: ETFE screw closure.

Notes: Completely disengage threads or remove cap before autoclaving.

Teflon® is a registered trademark of DuPont used under license by Nalge Nunc International Corporation.

Nalgene Low Particulate/Low Metals Bottles

Cat. No.	Capacity, mL (oz.)	Closure Size, mm	Neck I.D., mm	O.D., mm	Height with Closure, mm	No. per Pack	No. per Case
381600-0004	125 (4)	24	17	46	115	1	6
381600-0008	250 (8)	24	17	60	134	1	4
381600-0016	500 (16)	28	20	73	166	1	4
381600-0032	1000 (32)	38	26	90	203	1	4

► Thermo Scientific Nalgene Narrow-Mouth Bottles

Teflon® FEP, Tefzel™ ETFE closure



Nalgene™ FEP Narrow-Mouth Bottles are the most inert, chemical-resistant, corrosion-resistant containers available.

Outstanding resistance to virtually all chemicals and extreme temperatures. Ideal for trace metal analysis and applications involving organic solvents. Can be rigorously cleaned in boiling nitric acid. Guaranteed leakproof[†].

details

- Most inert, chemical-resistant, corrosion-resistant containers available – ideal for trace metal analysis and applications involving organic solvents
- Can withstand rigorous cleaning in boiling nitric acid – temperature range from -105°C (-157°F) to +150°C (+302°F) for a wide range of uses including high-purity storage. Can be autoclaved for sterilization
- Autoclavable/Leakproof[†]/Transparent/Teflon® FEP

Includes: ETFE screw closure.

Notes: These bottles cannot withstand gamma irradiation. Completely disengage threads or remove cap before autoclaving.

Teflon® is a registered trademark of DuPont used under license by Nalge Nunc International Corporation.

Nalgene Narrow-Mouth Bottles

Cat. No.	Capacity, mL (oz.)	Closure Size, mm	Neck I.D., mm	O.D., mm	Height with Closure, mm	No. per Pack	No. per Case
1600-0001	30 (1)	20	14	32	75	1	8
1600-0002	60 (2)	20	14	39	84	1	8
1600-0004	125 (4)	24	17	46	115	1	6
1600-0008	250 (8)	24	17	60	134	1	4
1600-0016	500 (16)	28	20	73	166	1	4
1600-0032	1000 (32)	38	26	90	203	1	4
1600-0064	2000 (64)	38-430	24	121	245	1	2

► Thermo Scientific Nalgene Narrow-Mouth Bottles

Teflon® PFA, Teflon® PFA screw closure



Nalgene™ Narrow-Mouth Bottles, Teflon® PFA; Teflon® PFA screw closure
Thermo Scientific Nalgene PFA Narrow-Mouth Bottles are the most temperature resistance, inert, chemical-resistant, corrosion-resistant containers available.

Outstanding resistance to virtually all chemicals and extreme temperatures. Ideal for trace metal analysis and applications involving organic solvents. Can be rigorously cleaned in boiling nitric acid. Guaranteed leakproof†.

details

- Withstand -270° to +250°C (-454° to +482°F)
- Inert to virtually all chemicals except molten alkali metals, fluorine at high temperatures, and complex halogenated compounds at high temperatures and pressures
- Packaged individually
- Autoclavable
- Leakproof† PFA closure

Includes: Leakproof†, linerless PFA screw closures.

Notes: These bottles cannot withstand gamma irradiation. Completely disengage threads or remove cap before autoclaving.

Teflon® is a registered trademark of DuPont used under license by Nalge Nunc International Corporation.

Nalgene Narrow-Mouth Bottles

Cat. No.	Capacity, mL (oz.)	Closure Size, mm	Neck I.D., mm	O.D, mm	Height with Closure, mm	No. per Pack	No. per Case
DS1630-0001	30 (1)	20	14	32	75	1	8
DS1630-0002	60 (2)	20	14	39	84	1	8
1630-0004	125 (4)	38-430	24	46	127	1	6
1630-0008	250 (8)	38-430	24	59	146	1	4
1630-0016	500 (16)	38-430	24	72	181	1	4
1630-0032	1000 (32)	38-430	24	90	216	1	4



► Thermo Scientific Nalgene Wide-Mouth Bottles

Teflon® FEP, Tefzel™ ETFE closure



Nalgene™ FEP Bottles with ETFE closures provide excellent temperature and chemical resistance.

Outstanding resistance to virtually all chemicals and extreme temperatures. Ideal for trace metal analysis and applications involving organic solvents. Can be rigorously cleaned in boiling nitric acid. Guaranteed leakproof[†].

details

- Most inert, chemical-resistant, corrosion-resistant containers available – ideal for trace metal analysis and applications involving organic solvents
- Can withstand rigorous cleaning in boiling nitric acid – temperature range from -105°C (-157°F) to +150°C (+302°F) for a wide range of uses including high-purity storage. Can be autoclaved for sterilization
- Wide-mouth for easy filling
- Autoclavable/Leakproof[†]/Transparent/Teflon® FEP

Includes: ETFE screw closure.

Notes: These bottles cannot withstand gamma irradiation. Completely disengage threads or remove cap before autoclaving.

Teflon® is a registered trademark of DuPont used under license by Nalge Nunc International Corporation.

Nalgene Wide-Mouth Bottles

Cat. No.	Capacity, mL (oz.)	Closure Size, mm	Neck I.D., mm	O.D., mm	Height with Closure, mm	No. per Pack	No. per Case
2100-0004	125 (4)	33	25	46	117	1	6
2100-0008	250 (8)	43	33	59	128	1	4
2100-0016	500 (16)	48	38	71	165	1	4
2100-0032	1000 (32)	53	43	91	209	1	4

► Thermo Scientific Nalgene Wide-Mouth EP Tox/TCLP Bottle

Teflon® FEP, Teflon® PFA lined white polypropylene closure



Nalgene™ Wide-Mouth EP Tox Bottles are ideal to use at high and low temperatures for trace metal analysis and applications with organic solvents.

Offers laboratory a safer alternative to glass.

details

- 2.2 L temperature-resistant PTFE resin FEP bottle has wide mouth for testing large-sized samples
- PTFE resin-lined polypropylene caps included
- Specially designed for U.S. EPA Method 1311: Toxicity Characteristic Leaching Program (TCLP)
- Autoclavable/Leakproof†

Includes: Polypropylene screw closure with PFA lining.

Notes: This bottle cannot withstand gamma irradiation. Completely disengage threads before autoclaving.

Teflon® is a registered trademark of DuPont used under license by Nalge Nunc International Corporation.

Nalgene Wide-Mouth EP Tox/TCLP Bottle

Cat. No.	Capacity, L	Closure Size, mm	Neck I.D., mm	O.D., mm	Height with Closure, mm	No. per Pack	No. per Case
2101-2200	2.2	100	89	119	241	1	2

▶ **Select the perfect container
for your application.**

Go to: www.thermoscientific.com/nalgenecontainers
or download our free apps from iTunes or the Android market
– search *Nalgene Bottles*.



► Thermo Scientific Nalgene Biotainer Bottles

polyethylene terephthalate copolyester, polyethylene foam lined polypropylene closures



Nalgene™ Biotainer™ Bottles are molded of crystal clear PETG.

Ideal for prolonged storage of pH sensitive materials such as culture media. Biotainer Bottles are certified sterile and ready to use. They eliminate the cost of cleaning, sterilizing and its associated validations, compared to bottles designed for re-use.

details

- Constructed of durable, crystal clear PETG – ensuring sample integrity
- Closures feature a PE foam core liner for leakproof assurance
- Customization options available for fluid transfer applications
- Supported by extensive validation documentation
- PETG Biotainers are suitable for storage in conditions from -40°C to +70°C

Compliance: USP Class VI, non-cytotoxic, USP <661>, non-pyrogenic, FDA 21CFR 177.1315.

Nalgene Biotainer Bottles

Cat. No.	Nominal Capacity, mL	Closure Size, mm	O.D., mm	Height with Closure, mm	No. per Pack	No. per Case
3025-42	125	38	52 Square	105	5	100
3005-42	500	38	77 Square	176	5	70
3005-70	500	38	77 Square	176	35	70
3110-42 ¹	1000	48	98 Square	201	5	35
3110-35 ¹	1000	48	98 Square	201	35	35
3230-20	2000	48	116 Square	265	20	20
3230-42	2000	48	116 Square	265	5	20
3415-16 ²	5 L	48	166 Square	299	1	6
3415-42 ²	5 L	48	166 Square	299	6	6

¹Fits 3-ported 48 mm closure for attachment of tubing

²With polyethylene handle

► Thermo Scientific Nalgene Biotainer Replacement Closures

polypropylene with silicone liner



Nalgene™ Biotainer Replacement Closures for 1 L, 2 L, 5 L, 10 L and 20 L PC Biotainer bottles and carboys.

details

- PP with silicone liner
- Closure size: 48 mm
- Sterile

Nalgene Biotainer Replacement Closures

Cat. No.	Description	Closure Size, mm	No. per Pack	No. per Case
362515-0480	Silicone-Lined Replacement Closures, sterile	48	1	300

► Thermo Scientific Nalgene InVitro Biotainer Bottles and Carboys

light blue polycarbonate, silicone lined polypropylene closures



Nalgene™ Biotainer™ bottles and carboys are excellent for freezing applications.

Nalgene Biotainer bottles and carboys are designed specifically for pharmaceutical and biological manufacturers. Supplied sterile and ready to use, they reduce the risk of carry-over contamination and eliminate the cost of cleaning, sterilization, and associated validations.

details

- Constructed of durable, translucent PC – ensuring the integrity of your sample
- Closures feature a silicone liner for leakproof[†] assurance
- Customization options available for fluid transfer applications
- Supported by extensive validation documentation
- Suitable for use in storage conditions of -100°C to +100°C

Compliance: USP Class VI, non-cytotoxic, USP <661>, non-pyrogenic, FDA 21CFR 177.1315 for 5 to 5000mL, and FDAa 21 CFR 177.1520 for 10 to 20 L.

Nalgene Biotainer Bottles

Cat. No.	Nominal Capacity, mL	Closure Size, mm	O.D., mm	Height with Closure, mm	No. per Pack	No. per Case
3500-05 ¹	5	20	22.4 Round	46.7	100	500
3500-20 ¹	20	20	29.7 Round	65.3	500	500
3030-42	125	38	52.1 Square	104.6	5	50
3120-42 ²	1000	48	98 Square	201	5	35
3233-42 ²	2000	48	116 Square	265	5	20
3405-16 ^{2,3}	5000	48	166 Square	299	1	6
3405-42 ²	5000	48	166 Square	299	6	6
3410-42 ²	10L	48	255 Square	337	1	2
3410-08 ^{2,3}	10L	48	255 Square	337	1	2
3423-42 ²	20L	48	255 Square	493	1	3

¹Validation vial

²Fits 3-ported 48 mm closure for attachment of tubing

³With polyethylene handle

► Thermo Scientific Nalgene Biotainer Bottles

high-density polyethylene, silicone lined polypropylene closures



Nalgene™ HDPE Biotainer™ Bottles are well suited for storage and transport of biological solutions.

HDPE Biotainer Bottles offer excellent chemical resistance, and are certified sterile and ready-to-use. They eliminate the cost of cleaning, sterilizing and its associated validations compared to bottle designed for reuse.

details

- Closures feature a silicone liner for leakproof* assurance
- Supported by extensive validation documentation
- Suitable for storage in conditions of -100°C to +120°C

Compliance: USP Class VI, non-cytotoxic, USP <661>, non-pyrogenic, FDA 21CFR 177.1520.

Nalgene Biotainer Bottles

Cat. No.	Nominal Capacity, L	Closure Size, mm	O.D., mm	Height with Closure, mm	No. per Pack	No. per Case
3750-24*	4	38	143 Square	299	8	24
3751-24	4	38	143 Square	299	24	24
3751-42	4	38	143 Square	299	8	24

► Thermo Scientific Nalgene 2- and 3- Ported Closures for Biotainer Bottles

polypropylene, silicone liner



Nalgene™ 48 mm Filling/Venting Closures are designed for aseptic handling solutions for pharmaceutical, biotechnology and laboratory liquid transfer applications.

Specifically designed to mate with Nalgene Biotainers with 48 mm closure.

details

- Ready to accept additional fluid transfer components such as aseptic connectors and vent filters
- Available in 2- and 3-ported versions
- Gamma-stabile material
- Ports have tubulations on inside and outside of the closure for attachment of tubing

Nalgene Closures for InVitro Biotainer Bottles

Cat. No.	Description	Neck Finish	Port I.D., in. (mm)	No. per Case
2560-0489	3-ported closure	48	2-1/4 (6.35), 1-3/16 (4.76)	4
2560-0490	2-ported closure	48	2-1/4 (6.35)	4

► Thermo Scientific Nalgene Autoclavable Carboys with Handles

polypropylene, white polypropylene closure, thermoplastic elastomer gasket



Nalgene™ Autoclavable Carboys with Handles are ideal for the containment of media, bulk pharmaceutical ingredients and other solutions.

details

- Convenient shoulder handles allow easy carrying and pouring
- Available in 10, 20, and 50 L sizes for a variety of biopharmaceutical applications
- Graduated to contain in liters and gallons
- Autoclavable/Graduated/Leakproof†

Related Products: Additional closure options include Nalgene Quick Filling/Venting Closures (Cat. No. 2158), Nalgene Filling/Venting Closures (Cat. No. 2162), Nalgene Top Works Fluid Transfer Systems (Cat. No. 2135).

Additional accessories include Nalgene Barbed Bulk Head Fittings (Cat. No. 6149).

Nalgene Autoclavable Carboys with Handles

Cat. No.	Capacity, L (gal.)	Nominal Brim Capacity, L (gal.)	Closure Size, mm	O.D., mm	Height with Closure, mm	No. per Pack	No. per Case
2250-0020	10 (2.5)	12 (3)	83B	250	389	1	6
2250-0050	20 (5)	22.5 (5.5)	83B	282	526	1	4
2250-0130	50 (13)	54 (14)	83B	379	678	1	1

► **Thermo Scientific Nalgene Heavy Duty Vacuum Carboys**
polypropylene, white polypropylene closure, thermoplastic elastomer gasket



Nalgene™ Heavy Duty Vacuum Carboys are ideal when service conditions are most extreme.

Useful as a vacuum trap; will hold a vacuum for 8 hours.

details

- Not rated for pressure use
- Customization options are available for fluid transfer applications
- Autoclavable/Leakproof†

Related Products:

Related Products: Additional closure options include Nalgene Quick Filling/Venting Closures (Cat. No. 2158), Nalgene Filling/Venting Closures (Cat. No. 2162), Nalgene Top Works Fluid Transfer Systems (Cat. No. 2135).

Additional accessories include Nalgene Barbed Bulkhead Fittings (Cat. No. 6149).

For 1-5 L sizes, please refer to Nalgene Heavy Duty Vacuum Bottles (Cat. No. 2126).

Nalgene Heavy Duty Vacuum Carboys

Cat. No.	Nominal Capacity, L (gal.)	Nominal Brim Capacity, L (gal.)	Closure Size, mm	O.D., mm	No. per Pack	No. per Case
2226-0020	10 (2.5)	12 (3)	83B	250	1	6
2226-0050	20 (5)	22.5 (5.5)	83B	282	1	4

► **Select the perfect container for your application.**

Go to: www.thermoscientific.com/nalgenecontainers
or download our free apps from iTunes or the Android market
– search *Nalgene Bottles*.

► Thermo Scientific Nalgene Round Clearboys

polycarbonate, white polypropylene closure, thermoplastic elastomer gasket



Nalgene™ Round Transparent Clearboys™ are durable, lighter and safer than glass.

Useful for large-volume media and culture preparation, especially where visual inspection of contents for quality is important. Ideal for refrigerated or frozen storage of aqueous solutions such as sterile water, reagents and media.

details

- Available in 10 L and 20 L sizes for a variety of biopharmaceutical applications
- Graduated to contain in liters and gallons
- Molded of transparent, durable polycarbonate
- Customization options available for fluid transfer applications
- Autoclavable/Graduated/Leakproof†

Related Products: Additional closure options include Nalgene Quick Filling/Venting Closures (Cat. No. 2158), Nalgene Filling/Venting Closures (Cat. No. 2162) Nalgene Top Works™ Fluid Transfer Systems (Cat. No. 2135) and Nalgene Validation Bottles (Cat. No. DS2127).

Additional accessories include Nalgene Barbed Bulk Head Fittings (Cat. No. 6149).

Nalgene Round Transparent Clearboys

Cat. No.	Capacity, L (gal.)	Nominal Brim Capacity, L (gal.)	Closure Size, mm	O.D., mm	Height with Closure, mm	No. per Pack	No. per Case
2251-0020	10 (2.5)	12.5 (3.3)	83B	253	394	1	4
2251-0050	20 (5)	24 (6)	83B	287	536	1	4

► Thermo Scientific Nalgene Validation Bottles

transparent polycarbonate, white polypropylene closures, TPE gasket



Nalgene™ Validation Bottles are the ideal size to perform material compatibility validation studies for Nalgene PC Carboys.

details

- Molded of durable translucent polycarbonate, ensuring the integrity of your samples
- Manufactured with all the same materials and molding processes as Nalgene PC Carboys (Cat. No. 2251)
- Accommodates convenient material compatibility validation requiring less amounts of expensive reagents
- Autoclavable

Nalgene Validation Bottles

Cat. No.	Nominal Capacity, mL (oz.)	Closure Size, mm	O.D., mm	Height with Closure, mm	No. per Pack	No. per Case
DS2127-0030	30 (1)	20-415	32	75	1	30
DS2127-0250	250 (8)	53B	74	135	1	6
DS2127-2000	2000 (64)	53B	123	296	1	12



▶ Thermo Scientific Nalgene Round Carboys

low density polyethylene, white polypropylene closure



Nalgene™ LDPE Round Carboys are an ideal choice for storage and transport of reagents.

details

- Wide shoulder handles allow for easy pouring and carrying with gloved hands
- Graduation to contain in liters and gallons
- Accepts 13.5 rubber stopper for alternative sealing method
- Leakproof†

Related Products: Additional closure options include Nalgene Quick Filling/Venting Closures (Cat. No. 2158), Nalgene Filling/Venting Closures (Cat. No. 2162), Nalgene Top Works Fluid Transfer Systems (Cat. No. 2135).

Nalgene Round Carboys

Cat. No.	Nominal Capacity, L (gal.)	Nominal Brim Capacity, L (gal.)	Closure Size, mm	O.D., mm	Height with Closure, mm	No. per Pack	No. per Case
2210-0020	10 (2.5)	12 (3)	83B	250	389	1	6
2210-0040	15 (3.75)	17	83B	285	429	1	4
2210-0050	20 (5)	22.5 (5.5)	83B	282	526	1	4
2210-0065	25 (6.5)	27.5	83B	287	594	1	4
2210-0130	50 (13)	54 (14)	83B	379	668	1	1

▶ Thermo Scientific Nalgene Fluorinated Carboys

high-density polyethylene, white polypropylene closure



Nalgene™ HDPE Fluorinated Carboys enhance long-term container performance, prevent permeation loss and yield lower extractables.

Fluorination improves barrier properties and reduces solvent absorption and penetration.

details

- Heavy-duty walls are safe, durable and resistant to splitting and punctures
- Fluorocarbon surfaces inside and out
- Graduated/Leakproof†

Nalgene Fluorinated Carboys

Cat. No.	Nominal Capacity, L (gal.)	Nominal Brim Capacity, L (gal.)	Closure Size, mm	O.D., mm	Height with Closure, mm	No. per Pack	No. per Case
2097-0020	10 (2.5)	12 (3)	83B	250	389	1	6
2097-0050	20 (5)	22.5 (5.5)	83B	282	526	1	4

► Thermo Scientific Nalgene Amber Carboy

high-density polyethylene, amber polypropylene closure



Nalgene™ Amber Carboys are an ideal choice for storing and mixing photosensitive chemicals, reagents, buffers and standards.

Meets the U.S. Pharmacopoeia Light Transmission Test (USP latest edition) requirements for storage of light-sensitive materials.

details

- Molded of opaque amber HDPE, offering excellent chemical resistance
- Convenient wide shoulder handles
- Leakproof†

Nalgene Amber Carboy

Cat. No.	Nominal Capacity, L (gal.)	Nominal Brim Capacity, L (gal.)	Closure Size, mm	O.D., mm	Height with Closure, mm	No. per Pack	No. per Case
2256-7020	10 (2.5)	12 (3)	83B	250	383	1	6

▶ **Select the perfect container
for your application.**

Go to: www.thermoscientific.com/nalgenecontainers
or download our free apps from iTunes or the Android market
– search *Nalgene Bottles*.



► Thermo Scientific Nalgene Single-Use Carboy

high-density polyethylene, white polypropylene closure



Nalgene™ Single-Use HDPE Carboys are safer than glass and are the ideal containers to economically maintain and transfer sterile fluids and reagents.

Sterile, ready-to-use carboys for one-time use.

details

- Wide-mouth design for easy filling and dispensing of liquids
- Suitable for use in storage conditions of -100°C to +120°C
- Molded of HDPE offering excellent chemical resistance and impact resistance
- Customization options available for fluid transfer applications
- Supported by extensive validation documentation
- Leakproof†

Ordering Information: Optional stainless steel handle available (2229-0001).

Compliance: USP Class VI, non-cytotoxic.

Nalgene Single-Use Carboy

Cat. No.	Nominal Capacity, L (gal.)	Nominal Brim Capacity, L (gal.)	Closure Size, mm	O.D., mm	Height with Closure, mm	No. per Pack	No. per Case
342289-0050	20 (5)	23 (6)	83B	284	502	1	6

► Thermo Scientific Nalgene Handle for Single-Use Carboy

stainless steel



Nalgene™ Handle for Single-Use Carboy attaches for easy transport.

details

- For use with Nalgene Sterile Single Use Carboy (Cat. No. 342889-0050)

Nalgene Handle for Single-Use Carboy

Cat. No.	Description	Material	No. per Case
2229-0001	Handle for 20 L Single-Use Carboy	Stainless Steel	1

► **Thermo Scientific Nalgene Autoclavable Wide-Mouth Carboys with Handles**
polypropylene, white polypropylene closure



Nalgene™ Autoclavable Wide-Mouth Carboys with Handles have a convenient large opening for storage and transport of solids and powders.

details

- Convenient wide shoulder handles; allows easy carrying and pouring, even with gloved hands
- Graduated to contain liters and gallons
- Wide-mouth opening promotes ease of cleaning and dispensing
- Autoclavable/Graduated/Leakproof†

Nalgene Autoclavable Wide-Mouth Carboys with Handles

Cat. No.	Nominal Capacity, L (gal.)	Nominal Brim Capacity, L (gal.)	Closure Size, mm	O.D., mm	Height with Closure, mm	No. per Pack	No. per Case
2235-0020	10 (2.5)	3 (12)	100-415	250	343	1	6
2235-0050	20 (5)	5.5 (22.5)	100-415	282	483	1	4

► Thermo Scientific Nalgene Wide-Mouth Carboys with Handles

low density polyethylene, white polypropylene closures



Nalgene™ LDPE Wide-Mouth Carboys with Handles have a convenient large opening for storage and transport of solids and powders.

details

- Convenient wide shoulder handles allow easy carrying and pouring, even with gloved hands
- Graduated to contain in liters and gallons
- Wide-mouth opening promotes ease of cleaning and dispensing, and can accommodate overhead mixers
- Graduated/Leakproof†/ Not Autoclavable*

Ordering Information: *For Autoclavable Wide-Mouth Carboys, please refer to Cat. No. 2235.

Nalgene Wide-Mouth Carboys with Handles

Cat. No.	Nominal Capacity, L (gal.)	Nominal Brim Capacity, L (gal.)	Closure Size, mm	O.D., mm	Height with Closure, mm	No. per Pack	No. per Case
2234-0020	10 (2.5)	12 (3)	100-415	250	343	1	6
2234-0030	15 (4)	17	100-415	286	389	1	6
2234-0050	20 (5)	22.5 (5.5)	100-415	282	483	1	4

► Select the perfect container for your application.

Go to: www.thermoscientific.com/nalgenecontainers
or download our free apps from iTunes or the Android market
– search *Nalgene Bottles*.

► Thermo Scientific Nalgene Sanitary Carboys polypropylene



Nalgene™ Sanitary Polypropylene Carboys with 3-inch sanitary neck have a non-threaded design.

The 3 in. flange accepts standard tri-clover style fittings. A clamping-closure system securely seals the carboy, requiring no torque while eliminating back-off issues.

details

- Sanitary design is easier to clean than threaded alternatives
- To seal closure, use a combination of gasket, end cap and sealing clamp
- Available in 10, 20 and 50 L sizes, supporting a variety of containment needs

Related products: PP End Caps (Cat. No. 2665-0300), Ported End Caps (Cat. No. 2688-2075 and 2689-2075), True Union Clamps (Cat. No. 2670-0300), Gaskets (Cat. No. 2672-0300).

Nalgene Carboys with 3 in. Sanitary Neck Design

Cat. No.	Nominal Capacity, L (gal.)	Neck Finish	O.D., mm	Height with Ferrule, mm	No. per Pack	No. per Case
2630-0010	10 (2.5)	3- in. Tri Clover	250	353	1	1
2630-0020	20 (5)	3- in. Tri Clover	282	496	1	1
2630-0050	50 (13)	3- in. Tri Clover	379	545	1	1

► Thermo Scientific Nalgene Sanitary Carboy polycarbonate



Nalgene™ Sanitary Carboy is a one-piece molded, non-threaded, design for use as receiver or dispensing vessel in biopharmaceutical applications.

The 3 in. flange accepts standard tri-clover style fittings. A clamping-closure system securely seals the carboy, requiring no torque while eliminating back-off issues.

details

- Sanitary design is easier to clean than threaded alternatives
- Molded of same PC resin as Nalgene PC Clearboys and PC Bottles, supporting a switch to Sanitary PC Carboys without material validation issues
- To seal closure, use a combination of gasket, end cap and sealing clamp
- Sanitary Carboy also available in PP (Cat. No. 2630)
- Graduated/Autoclavable

Related products: PP End Caps (Cat. No. 2665-0300), Ported End Caps (Cat. No. 2688-2075 and 2689-2075), True Union Clamps (Cat. No. 2670-0300), Heavy Duty Clamp (Cat. No. 2685-0300), Gaskets (Cat. No. 2672-0300).

Nalgene Sanitary Carboy

Cat. No.	Nominal Capacity, L (gal.)	Neck Finish	O.D., mm	Height with Ferrule, mm	No. per Pack	No. per Case
2261-0050	20 (5)	3 in. Tri Clover	287	498	1	4

► Thermo Scientific Nalgene Autoclavable Carboys with Sanitary Flange

polypropylene, white polypropylene closure, thermoplastic elastomer gasket



Nalgene™ Autoclavable Carboys feature a 1-1/2 in. secure, non-threaded sanitary dispensing port. They are ideal for use as a supply reservoir.

details

- Convenient molded-in handles for easy handling
- Graduated to contain in liters and gallons
- Dispensing port used in combination with 1-1/2 in gasket and True Union Clamp
- Autoclavable/Graduated/Leakproof†

Compliance: USP Class VI, non-cytotoxic.

Related products: Gasket (Cat. No. 2672-0150), True Union Clamps (Cat. No. 2670-0150).

Nalgene Autoclavable Carboys Sanitary Flanges

Cat. No.	Nominal Capacity, L (gal.)	Approx Brim Capacity, L (gal.)	Closure Size	O.D., mm	Height with Closure, mm	No. per Pack	No. per Case
2640-0020	10 (2.5)	12 (3)	83B, 1-1/2 in. Tri Clover	250	389	1	1
2640-0050	20 (5)	22.5 (5.5)	83B, 1-1/2 in. Tri Clover	282	526	1	1
2640-0130	50 (13)	54 (14)	83B, 1-1/2 in. Tri Clover	379	678	1	1

▶ Thermo Scientific Nalgene End Caps

polypropylene



Nalgene™ Polypropylene End Caps are used to securely close off 3/4 in. mini and 3 in. sanitary ports on Nalgene Sanitary Carboys.

Groove on underside of the end cap accepts standard sanitary gasket for sealing the systems.

details

- Offers a reliable, repeatable seals when used in combination with silicone gasket (Cat. No. 2672) and True Union Clamp (Cat. No. 2670)
- Autoclavable

Compliance: USP Class VI.

Related products: PP Sanitary Carboy (Cat. No. 2630), PC Sanitary Carboy (Cat. No. 2261), Silicone Gaskets (Cat. No. 2672), True Union Clamp (Cat. No. 2670), Heavy Duty Clamp (Cat. No. 2685).

Nalgene End Caps

Cat. No.	Description	No. per Case
2665-0075	End cap for 3/4 in. Mini	1
2665-0300	End cap for 3 in. Tri Clover	1

▶ Thermo Scientific Nalgene End Caps

polycarbonate or polypropylene



Nalgene™ End Caps in PC or PP provide sanitary ports including 3/4 in. Mini, which offer easy filling and dispensing.

Securely mounts to 3-inch sanitary flange for applications used with Nalgene Sanitary Carboys.

details

- Available in PC and PP
- Autoclavable
- Offer a reliable, repeatable seals when used in combination with silicone gasket and True Union Clamps
- Customization options available when used with 3/4 in. Mini Hose Barb fitting

Related products: PP Sanitary Carboy (Cat. No. 2630), PC Sanitary Carboy (Cat. No. 2261), Silicone Gaskets (Cat. No. 2672), True Union Clamp (Cat. No. 2670), Heavy Duty Clamp (Cat. No. 2685), 3/4 in. Mini Hose Barb fitting (Cat. No. 7210).

Nalgene End Caps

Cat. No.	Description	Port Size, in.	No. per Pack	No. per Case
2688-2075	PC ported end cap for 3 in. Tri Clover	3/4 in. Mini x 2	1	4
2689-2075	PP ported end cap for 3 in. Tri Clover	3/4 in. Mini x 2	1	4

► Thermo Scientific Nalgene Sanitary Gaskets for Thermo Scientific Nalgene Carboys platinum cured silicone



Nalgene™ Silicone Sanitary Gaskets offers a reliable leakproof seal when used with Nalgene end caps and true-union clamps.

Constructed of Platinum Cured Silicone, the gaskets ensure the highest degree of purity for biopharmaceutical applications.

details

- For use with Nalgene Carboys (Cat. Nos. 2261, 2630, and 2640)
- Autoclavable

Related products: PP Sanitary Carboy (Cat. No. 2630), PC Sanitary Carboy (Cat. No. 2261), Silicone Gaskets (Cat. No. 2672), True Union Clamp (Cat. No. 2670), Heavy Duty Clamp (Cat. No. 2685).

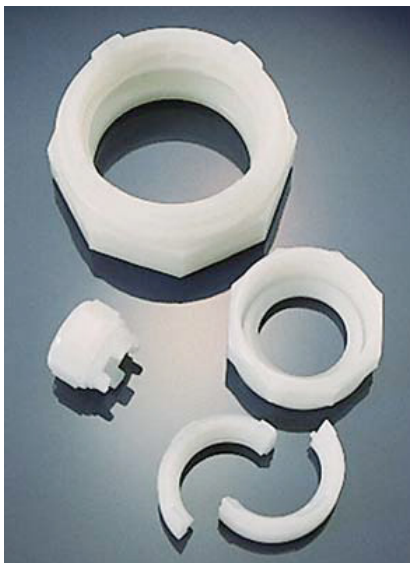
Compliance: Meets USP Class VI requirements.

Nalgene Sanitary Gaskets for Nalgene Carboys

Cat. No.	Description	No. per Pack	No. per Case
2672-0075	Gasket for 3/4 in. Mini	1	6
2672-0150	Gasket for 1-1/2 in. Tri Clover	1	6
2672-0300	Gasket for 3 in. Tri Clover	1	6

▶ Thermo Scientific Nalgene True Union Clamps

polyvinylidene fluoride



Nalgene™ True Union Clamps offer reliable, repeatable seals when used in combination with silicone gasket and end caps.

details

- Constructed of PVDF fluoride
- Autoclavable

Related products: PP End Caps (Cat. No. 2665), Ported End Caps (Cat. Nos. 2688-2075 and 2689-2075), and Gaskets (Cat. No. 2672).

Nalgene True Union Clamps

Cat. No.	Description	No. per Case
2670-0075	True Union Clamp for 3/4 in. Mini	1
2670-0150	True Union Clamp for 1-1/2 in. Tri Clover	1
2670-0300	True Union Clamp for 3 in. Tri Clover	1

▶ Thermo Scientific Nalgene Heavy Duty Clamps

stainless steel



Nalgene™ Heavy Duty Stainless Steel Clamps assure leakproof fluid seals for use with Nalgene Sanitary Carboys.

details

- Strong, spring-loaded clamp
- For use with Nalgene PC Sanitary Carboy (Cat. No. 2261)
- Autoclavable

Related products: PP End Caps (Cat. No. 2665-0300), Ported End Caps (Cat. Nos. 2688-2075 and 2689-2075), Gaskets (Cat. No. 2672-0300).

Nalgene Heavy Duty Stainless Steel Clamps

Cat. No.	Description	No. per Pack	No. per Case
2685-0300	Stainless Steel Clamp for 3 in. Tri Clover	1	1

► Thermo Scientific Nalgene Autoclavable Rectangular Carboys polypropylene



Nalgene™ Rectangular Carboys are molded of tough, translucent and autoclavable polypropylene. Ideal for storing solutions and handling large volumes of powders and other solid samples.

details

- Large-neck opening for easy filling and cleaning
- Includes sturdy stainless steel handle attached to molded-in shoulder loops
- Graduated in liters and gallons
- Autoclavable/Graduated/Leakproof†

Nalgene Autoclavable Rectangular Carboys

Cat. No.	Nominal Capacity, L (gal.)	Nominal Brim Capacity, L (gal.)	Closure Size, mm	L x W x H, mm (in.)	No. per Pack	No. per Case
2212-0020	9 (2)	9 (2)	100-415	220 x 153 x 360 (9 x 6 x 14)	1	6
2212-0050	20 (5)	21 (5.5)	100-415	320 x 229 x 399 (13 x 9 x 16)	1	4

► Thermo Scientific Nalgene Rectangular Clearboys polycarbonate, polypropylene closure



Nalgene™ Rectangular Clearboys™ are lightweight, space-saving and durable.

These carboys are ideal for storing solutions and handling large volumes of powders and other solid samples.

details

- Wide-mouth opening permits easy filling, transferring and cleaning
- Graduated to contain in liters and gallons
- Stainless steel handle for ease in transporting containers
- Molded of transparent PC, making this carboy ideal when visual inspection of contents is required
- Autoclavable/Graduated/Leakproof†

Nalgene Rectangular Clearboys

Cat. No.	Capacity, L (gal.)	Nominal Brim Capacity, L (gal.)	Closure Size, mm	L x W x H, mm (in.)	No. per Pack	No. per Case
DS2213-0020	9 (2)	9 (2)	100-415	220 x 153 x 360 (9 x 6 x 14)	1	1
DS2213-0050	20 (5)	21 (5.5)	100-415	320 x 229 x 399 (13 x 9 x 16)	1	1

▶ Thermo Scientific Nalgene Rectangular Carboys

high-density polyethylene, polypropylene closure



Nalgene™ HDPE Rectangular Carboys have a sturdy, space-saving design.

These carboys are ideal for storing solutions and handling large volumes of powders and other solid samples.

details

- Graduated to contain liters and gallons
- Wide-mouth opening permits easy filling, transferring and cleaning
- Includes sturdy stainless steel handle attached to molded-in shoulder loops
- Autoclavable/Graduated/Leakproof†

Nalgene Rectangular Carboys without Spigots

Cat. No.	Capacity, L (gal.)	Nominal Brim Capacity, L (gal.)	Closure Size, mm	L x W x H, mm (in.)	No. per Pack	No. per Case
2211-0020	9 (2)	9 (2)	100-415	220 x 153 x 360 (9 x 6 x 14)	1	6
2211-0050	20 (5)	21 (5.5)	100-415	320 x 229 x 399 (13 x 9 x 16)	1	4

▶ Thermo Scientific Nalgene Heavy-Duty Rectangular Carboys

high-density polyethylene, white polypropylene closure



Nalgene™ HDPE Heavy-Duty Rectangular Carboys provide a space-saving option for storing and transporting reagents and other liquids.

details

- Heavy-walled construction for durability and chemical resistance
- Graduated to contain in liters and gallons
- Design includes integral handle for easy transport and pouring
- Graduated/Leakproof†

Nalgene Heavy-Duty Rectangular Carboys

Cat. No.	Capacity, L (gal.)	Nominal Brim Capacity, L (gal.)	Closure Size, mm	L x W x H, mm (in.)	No. per Pack	No. per Case
2214-0050	20 (5)	20 (5)	70	330 x 228 x 406 (13 x 9 x 16)	1	4

► Thermo Scientific Nalgene Heavy-Duty Wide Mouth Jug

high-density polyethylene, white polypropylene closure



Nalgene™ Heavy-Duty Wide Mouth Jug features a large, 120 mm opening.

Molded-in handle and recessed bottom provide a sturdy grip when lifting and pouring. Wide stance and low center of gravity assure stability.

details

- Wide-mouth opening permits easy filling, transferring and cleaning of jugs
- Ideal for storing solids or powders
- Graduated to contain in liters and gallons
- Space-saving rectangular shape optimizes limited storage space

Nalgene Heavy-Duty Wide Mouth Jug

Cat. No.	Nominal Capacity, L (gal.)	Nominal Brim Capacity, L (gal.)	Closure Size, mm	L x W x H, mm (in.)	No. per Pack	No. per Case
2241-0050	20 (5)	25 (6.6)	120	305 x 203 x 457 (12 x 8 x 18)	1	4

► Thermo Scientific Nalgene Jerricans

high-density polyethylene, white tethered polypropylene closure



Nalgene™ HDPE Jerricans have a rugged design with wide stance and low center of gravity that provide greater stability.

details

- Integral spout is angled for easy, accurate pouring
- Includes tethered closure, preventing loss
- Graduated to contain in liters and gallons
- Molded-in handle and recessed bottom provides a sturdy grip when lifting and pouring
- Space-saving rectangular shape optimizes limited storage space
- Graduated/Leakproof†

Nalgene Jerricans

Cat. No.	Nominal Capacity, L (gal.)	Nominal Brim Capacity, L (gal.)	Closure Size, mm	L x W x H, mm (in.)	No. per Pack	No. per Case
2240-0015	6 (1.5)	8 (2)	53B	213 x 176 x 335 (8 x 7 x 13)	1	6
2240-0025	10 (2.5)	12 (3)	53B	246 x 199 x 376 (10 x 8 x 15)	1	6
2240-0050	20 (5.0)	24 (6)	53B	320 x 245 x 452 (13 x 10 x 18)	1	4

► Thermo Scientific Nalgene 13 L Jerrican

high-density polyethylene with tethered polypropylene closure



Nalgene™ Jerricans have a unique double-spout design, ideal as a reservoir in automated systems.

Rugged design with wide stance and low center of gravity provides stability.

details

- 53B closure can be customized with input/output tubing, while the 38 mm closure can be used for refilling and emptying
- Molded-in handle provides a sturdy grip when carrying heavy contents
- Integral shoulder handle and molded bottom grip offers added assistance with lifting
- Molded of HDPE, offering good chemical resistance for a wide variety of solutions
- Space-saving rectangular shape optimizes limited storage space

Related products: Nalgene Quick Filling/Venting Closures (Cat. No. 2158), or Nalgene Filling/Venting Closures (Cat. No. 2162)

Additional accessories include Nalgene Barbed Bulkhead Fittings (Cat. No. 6149)

Compliance: USP Class VI FDA21 CFR 177.1520.

Nalgene 13 L Jerrican

Cat. No.	Nominal Capacity, L (gal.)	Nominal Brim Capacity, L (gal.)	Closure Size, mm	L x W x H, mm (in.)	No. per Pack	No. per Case
2243-0013	13 (3.5)	14 (3.7)	53B	290 x 189 x 378 (11 x 7 x 15)	1	4
2243-9013	13 (3.5)	14 (3.7)	53B; 38-430	290 x 189 x 378 (11 x 7 x 15)	1	4

► Select the perfect container for your application.

Go to: www.thermoscientific.com/nalgenecontainers
or download our free apps from iTunes or the Android market
– search *Nalgene Bottles*.

► Thermo Scientific Nalgene Fluorinated Jerricans

high-density polyethylene, white polypropylene closure



Nalgene™ Fluorinated Jerricans have a rugged design with wide stance and low center of gravity that provide greater stability.

Fluorinated surface inside and out improves barrier properties and reduces solvent absorption while enhancing long-term container performance and prevents loss due to permeation.

details

- Includes tethered closure preventing loss
- Graduated to contain in liters and gallons
- Molded-in handle and recessed bottom provides a sturdy grip when carrying heavy contents
- Space-saving rectangular shape optimizes limited storage space
- Graduated/Leakproof†

Nalgene Jerricans

Cat. No.	Nominal Capacity, L (gal.)	Nominal Brim Capacity, L (gal.)	Closure Size, mm	L x W x H, mm (in.)	No. per Pack	No. per Case
2242-0025	10 (2.5)	12 (3)	53B	246 x 199 x 376 (10 x 8 x 15)	1	6
2242-0050	20 (5)	24 (6)	53B	320 x 245 x 452 (13 x 10 x 18)	1	4

► Thermo Scientific Nalgene Replacement Closures for Large Carboys and Bottles



Designed to fit Nalgene™ Carboys and Bottles to provide a guaranteed leakproof system.

details

- Fits Nalgene Large Carboys and Bottles with 53B and 83B neck finishes

Nalgene Closures for Large Carboys and Bottles; white, autoclavable

Cat. No.	Description	No. per Pack	No. per Case
712160-0384	38-430 Replacement Closure for Large Nalgene Bottles	12	12
712160-0530	53B Replacement Closure for Large Nalgene Bottles or Carboys	12	12
712160-0830	83B Replacement Closure for Large Nalgene Bottle or Carboy	2	2
712160-0053	TPE Gasket for 53B Closure	12	12
712162-1830	TPE Gasket for 83B Closure	5	5

Nalgene Replacement Closures; white high-density polyethylene

Cat. No.	Description	No. per Pack	No. per Case
712151-0053	53B Replacement Cap w/ TPE Gasket for Large Nalgene Bottles or Carboys	12	12

Nalgene Replacement Closures, high-density polyethylene

Cat. No.	Description	No. per Pack	No. per Case
712151-0083	83B Replacement Cap w/ TPE Gasket for Large Nalgene Bottles or Carboys	2	2

Nalgene Replacement Closure with Strap, white polypropylene

Cat. No.	Description	No. per Pack	No. per Case
712240-1053	53B Replacement Closure and Strap for Jerrican	10	10



▶ Thermo Scientific Class 100/10 Particle-Certified Glassware

clear and amber glass, polypropylene closure



Thermo Scientific Particle-Certified glassware protects the quality of products or laboratory samples.

Assembled to contain as few as 5 particles per mL > 0.5 microns. Assembled using low-shedding polypropylene closures with chemically inert PTFE faced silicone liners that do not contain adhesives. Bagged for cleanroom use. Use for bulk intermediate storage, and pharmaceutical, biotech and medical use.

details

- Produced in our Class 10/100 cleanroom
- Certificate of Analysis provided

Class 100/10 Particle-Certified Glassware

Cat. No.	Description	Capacity oz. (mL)	Closure Size (mm)	Liner	O.D. x H, in.	O.D. x H, mm	No. per Case
140-40C/LP	Clear vials with open top polypropylene closure with septa	1.42 (42)	24-414	PTFE / Silicone	1.125 x 3.75	20.86 x 90.53	90
114-125CT/LP	Clear glass Boston round bottle with closed-top closure	4 (125)	24-414	PTFE / Silicone	1.875 x 4.375	47.63 x 111.13	12
114-250C/LP	Clear glass Boston round bottle with closed-top closure	8 (250)	24-414	PTFE / Silicone	2.375 x 5.375	60.33 x 136.53	24
114-060A/LP	Amber glass Boston round bottle with open-top septa closure	2 (60)	20-400	PTFE / Silicone Septa	1.875 x 4.375	47.63 x 111.13	24
114-125A/LP	Amber glass Boston round bottle with closed-top closure	4 (125)	24-414	PTFE / Silicone	1.875 x 4.375	47.63 x 111.13	12
114-250A/LP	Amber glass Boston round bottle with closed-top closure	8 (250)	24-414	PTFE / Silicone	2.375 x 5.375	60.33 x 136.53	12
113-500A/LP	Amber glass Boston round low particle	16 (500)	28-400	PTFE	3.00 x 6.625	76.20 x 168.28	12
130-005/LP	Amber wide-mouth bottle with closure	0.5 (15)	28-400	PTFE	1.188 x 2.00	30.18 x 50.80	57
112-01A/LP	Amber glass wide-mouth bottle with closure	32 (1000)	33-430	PTFE / Silicone	3.75 x 8.50	95.25 x 215.90	12
120-02A/LP	Amber glass packer bottle with lined closure	2 (60)	33-400	PTFE	1.75 x 3.00	44.45 x 76.20	24
120-04A/LP	Amber glass packer bottle with PTFE lined polypropylene closure	4 (125)	38-400	PTFE	2.00 x 3.75	50.80 x 95.25	12
121-08A/LP	Amber glass wide-mouth packer bottle with closure	8 (250)	45-400	PTFE	4.75 x 2.5	120.65 x 63.50	12
122-16A/LP	Amber glass wide-mouth packer bottle with closure	16 (500)	53-400	PTFE	5.80 x 3.18	147.32 x 80.77	12
123-80A/LP	Amber glass wide-mouth packer bottle with closure	84 (2500)	70-400	PTFE	5.50 x 9.375	139.70 x 238.13	4
110-80A/LP	Amber glass jug with closure	40 (2500)	38-430	PTFE / Silicone	5.40 x 12.20	130.72 x 300.99	6
111-04A/LP	Amber glass jug with closure	128 (4000)	38-430	PTFE / Silicone	6.25 x 13.25	158.75 x 336.55	4

► Thermo Scientific Class 100/10 Particle-Certified Bottles

HDPE narrow-mouth bottle, polypropylene closure



Thermo Scientific Particle-Certified bottles protect the quality of products or laboratory samples.

Assembled to contain as few as 5 particles per mL > 0.5 microns). Double-bagged and ready for cleanroom use. Leakproof container/closure system ensure suitable for use in sample packaging and may be used with combination packaging for hazardous shipping. Use for bulk intermediate storage, cleanroom storage, and pharmaceutical, biotech and medical use.

details

- Produced in our Class 10/100 cleanroom
- Optional QC documentation available for several trace metals
- Certificate of Analysis provided

Class 100/10 Particle-Certified Bottles

Cat. No.	Description	Capacity oz. (mL)	Closure Size (mm)	Liner	O.D. x H, in.	O.D. x H, mm	No. per Case
156-125W/N/LP	HDPE narrow mouth Nalgene bottle with closure	4 (125)	24-415	N/A	2.00 x 4.00	50.80 x 101.60	24
157-250W/N/LP	HDPE narrow mouth Nalgene bottle with closure	8 (250)	24-415	N/A	2.50 x 5.25	63.50 x 133.35	24
150-01W/N/LP	HDPE narrow-mouth Nalgene bottle with closure	32 (1000)	38-430	N/A	3.625 x 8.50	92.08 x 215.90	12
156-125W/N/LPM	HDPE narrow mouth Nalgene bottle with closure, low metal	4 (125)	24-415	N/A	2.00 x 4.00	50.80 x 101.60	24
157-250W/N/LPM	HDPE narrow mouth Nalgene bottle with closure, low metal	8 (250)	24-415	N/A	2.50 x 5.25	63.50 x 133.35	24
150-01W/N/LPM	HDPE narrow mouth Nalgene bottle with closure, low metal	32 (1000)	38-430	N/A	3.625 X 8.50	92.08 x 215.90	12

► Thermo Scientific Total Organic Carbon Certified Vials

clear and amber glass, polypropylene closure



Low-level certified vials for Total Organic Carbon testing and sampling.

Available in several sizes including the popular 40 mL autosampler vials cleaned, certified, and ready to use. Each lot of vials is tested and certified to contribute <10ppb or < 20 ppb TOC as background. Use for USP Method 643 Testing, off-line and grab sampling of high purity water, storage and preparation of standards

details

- 40 mL vials fit most automated TOC instruments
- Simplify and reduce cost of cleaning validation
- Certificate of Analysis included

Total Organic Carbon Certified Vials

Cat. No.	Description	Capacity oz. (mL)	Closure Size (mm)	Liner	O.D. x H, in.	O.D. x H, mm	No. per Case
40C-TOC	Clear glass vial with open-top closure, dust covers (certified for less than 20ppb for TOC)	1.35 (40)	24-414	PTFE / Silicone Septa	1.125 x 3.75	28.58 x 95.25	72
40C-TOC/DB	Clear glass vial with open-top closure, dust covers (certified for less than 20ppb for TOC)	1.35 (40)	24-414	PTFE / Silicone Septa	1.125 x 3.75	28.58 x 95.25	144
40C-TOC/DB/LL	Clear glass vial with open-top closure, dust covers (certified for less than 10ppb for TOC)	1.35 (40)	24-414	PTFE / Silicone Septa	1.125 x 3.75	28.58 x 95.25	144
40C-TOC/LL	Clear glass vial with open-top closure, dust covers (certified for less than 10ppb for TOC)	1.35 (40)	24-414	PTFE / Silicone Septa	1.125 x 3.75	28.58 x 95.25	72
CT18-TOC	16x125 screw thread glass tube (round bottom) silanized with closure (certified for less than 20ppb for TOC)	0.6 (18)	15-425	PTFE / Silicone Septa	0.563 x 5.00	14.30 x 127	255
CT18-TOC/LL	16x125 screw thread glass tube (round bottom) silanized with closure (certified for less than 10ppb for TOC)	0.6 (18)	15-425	PTFE / Silicone Septa	0.563 x 5.00	14.30 x 127	255
SCT-18100/TOC	18x100 flat bottom clear glass tube with closure (certified for less than 20ppb for TOC)	0.85 (5)	15-425	PTFE / Silicone	0.938 x 6.00	23.83 x 152.40	200
S114-250C/TOC	Clear glass Boston round bottle with open-top closure	8 (250)	24-414	PTFE / Silicone Septa	2.375 x 5.375	60.33 x 136.53	24
1000C/TOC	Clear glass Boston round bottle with closure	32 (1000)	33-400	PTFE	3.75 x 8.50	95.25 x 215.90	12
40A-TOC/DB/LL	Amber vial open top, welded septum with cap cover double box	1.35 (40)	24-414	PTFE / Silicone Septa	1.125 x 3.75	28.58 x 95.25	144
S114-125A/TOC	Amber glass Boston round bottle with closed-top closure	4 (125)	22-400	PTFE / Silicone	1.875 x 4.375	47.63 x 111.13	12
S114-250A/TOC	Amber glass Boston round bottle with open-top closure	8 (250)	24-414	PTFE / Silicone Septa	2.375 x 5.375	60.33 x 136.53	12
1000A/TOC	Amber Boston round glass bottle with closure	32 (1000)	33-430	PTFE	3.75 x 8.50	95.25 x 215.90	12

▶ Thermo Scientific Total Organic Carbon Water

high purity specialty water



Thermo Scientific high-purity specialty water is low in organic and inorganic impurities at the time of packaging.

Processing includes reverse osmosis, activated carbon and ultraviolet TOC reduction. Certified to down to 50 ppb. Use for sample and standard dilutions, lab blank determination and equipment rinsing.

details

- Exceeds 17 megaOhm resistivity
- Filtered through 0.1 micron hydrophobic membrane filters

Total Organic Carbon Water

Cat. No.	Description	Closure oz. (mL)	Closure Size (mm)	Liner	O.D. x H, in.	O.D. x H, mm	No. per Case
111-04A/C-TOC	TOC water in amber jug with closure	128 (4000)	38-430	PTFE / Silicone	6.25 x 13.25	158.75 x 336.55	4
112-01A/CTOC	TOC water in amber jug with closure	32 (1000)	33-430	PTFE / Silicone	3.70 X 8.10	93.98 x 205.74	12



▶ Thermo Scientific Depyrogenated Glassware

clear and amber glass, polypropylene closure with PTFE liner



Thermo Scientific depyrogenated glassware are endotoxin-free containers validated to meet 0.06 EU/mL.

Containers are cleaned in proprietary HEPA filtered washing equipment with endotoxin-free water, at 250° C, and clean-packaged in HEPA filtered workstations. Use for packaging for terminally sterilized product, sample storage, water sampling and storage of laboratory reagents and medias.

details

- Cleaning and packaging performed in our Class 100/10 cleanroom
- Endotoxin levels surpass USP Water for Injection (0.25 EU/mL)
- Certificate of Analysis provided

Depyrogenated Glassware

Cat. No.	Description	Capacity oz. (mL)	Closure Size (mm)	Liner	O.D. x H, in.	O.D. x H, mm	No. Per Case
23-CTP4/PF	Clear glass vial with closed-top urea closure	0.12 (4)	13-425	PTFE	0.591 x 1.77	15.01 x 11.96	72
139-20C/CT/LP/PF	Clear glass vial with closed top black polypropylene closure	0.75 (22)	24-400	PTFE/Silicone	1.125 x 2.25	28.6 x 57.75	72
130-02C/PF	Clear wide-mouth glass straight side with closure	2 (60)	53-400	PTFE	2.25 x 1.875	57.15 x 47.63	24
130-04C/PF	Clear wide-mouth short glass straight side with closure	4 (125)	58-400	PTFE	2.375 x 2.625	60.33 x 66.68	24
130-04C/TL/PF	Clear tall wide-mouth glass with closure	4 (125)	48-400	PTFE	2.00 x 4.00	50.80 x 101.60	24
131-08C/PF	Clear glass straight side wide-mouth jar with closure	8 (250)	70-400	PTFE	2.875 x 3.5	73.03 x 88.90	24
132-16C/PF	Clear glass straight side wide-mouth jar	16 (500)	89-400	PTFE	3.5 x 3.875	88.9 x 98.43	12
133-32C/PF	Clear glass wide-mouth bottle with closure	32 (1000)	89-400	PTFE	3.75 x 6.625	95.25 x 168.28	12
117-2L/PF	Clear glass wide-mouth bottle with closure	64 (2000)	83-400	PTFE	5.00 x 8.50	127.00 x 215.90	6
117-4L/PF	Clear glass wide-mouth bottle with closure	128 (4000)	89-400	PTFE	6.25 x 10.00	158.75 x 254	4
C20-02A/PF	Amber wide-mouth glass jar with closure	2 (60)	33-400	PTFE	1.625 x 3.00	41.28 x 76.20	24
130-04A/PF	Amber wide-mouth short glass straight side with closure	4 (125)	58-400	PTFE	2.25 x 2.75	57.15 x 69.85	24
C20-04A/PF	Amber glass wide-mouth packer bottle with closure	4 (125)	38-400	PTFE	2.125 x 3.75	53.98 x 95.25	24
121-08A/PF	Amber glass wide-mouth packer bottle with closure	8 (250)	45-400	PTFE	4.75 x 2.5	120.65 x 63.50	12
131-08A/PF	Amber glass straight side wide-mouth jar with closure	8 (250)	70-400	PTFE	2.875 x 3.5	73.03 x 88.90	24
122-16A/PF	Amber glass wide-mouth packer bottle with closure	16 (500)	53-400	PTFE	5.80 x 3.18	147.32 x 80.77	12
123-32A/PF	Amber glass wide-mouth packer bottle with closure	32 (1000)	53-400	PTFE	3.87 x 7.25	98.30 x 184.15	12
123-40A/PF	Amber glass wide-mouth packer bottle with closure	40 (1200)	70-400	PTFE	7.500 x 4.125	190.50 x 104.78	24
123-80A/PF	Amber glass wide-mouth packer bottle with closure	84 (2500)	70-400	PTFE	5.50 x 9.375	139.70 x 238.13	4

► **Thermo Scientific Depyrogenated Sterile Vials**
clear and amber glass, butyl rubber stopper

Depyrogenated Sterile Vials

Cat. No.	Description	Capacity oz. (mL)	Closure Size (mm)	Liner	O.D. x H, in.	O.D. x H, mm	No. per Case
ST1-11	Clear glass vial pre-assembled with stopper and aluminum crimp seal	0.034 (1)	11	N/A	0.469 x 1.188	113.51 x 30.18	100
ST2-13	Clear glass vial pre-assembled with stopper and aluminum crimp seal	0.068 (2)	13	N/A	0.50 x 1.313	12.70 x 33.35	100
ST5-13	Clear glass vial pre-assembled with stopper and aluminum crimp seal	0.17 (5)	13	N/A	0.594 x 2.00	15.09 x 50.80	50
ST5-20	Clear glass vial pre-assembled with stopper and aluminum crimp seal	0.17 (5)	20	N/A	0.781 x 1.50	19.84 x 38.10	50
ST10-20	Clear glass vial pre-assembled with stopper and aluminum crimp seal	0.34 (10)	20	N/A	0.813 x 2.00	20.65 x 50.80	50
ST20-20	Clear glass vial pre-assembled with stopper and aluminum crimp seal	0.68 (20)	20	N/A	0.969 x 2.313	24.61 x 58.75	50
ST30-20	Clear glass vial pre-assembled with stopper and aluminum crimp seal	1.014 (30)	20	N/A	1.313 x 2.50	33.35 x 63.50	50
ST50-20	Clear glass vial pre-assembled with stopper and aluminum crimp seal	1.7 (50)	20	N/A	1.50 x 2.688	38.1 x 68.28	50
ST100-20	Clear glass vial pre-assembled with stopper and aluminum crimp seal	3.4 (100)	20	N/A	1.75 x 3.75	44.45 x 95.25	50
ST2-13A	Amber glass vial pre-assembled with stopper and aluminum crimp seal	0.068 (2)	13	N/A	0.50 x 1.313	12.70 x 33.35	100
ST5-20A	Amber glass vial pre-assembled with stopper and aluminum crimp seal	0.17 (5)	20	N/A	0.781 x 1.50	19.84 x 38.10	50
ST10-20A	Amber glass vial pre-assembled with stopper and aluminum crimp seal	0.34 (10)	20	N/A	0.813 x 2.00	20.65 x 50.80	50
ST30-20A	Amber glass vial pre-assembled with stopper and aluminum crimp seal	1.014 (30)	20	N/A	1.313 x 2.50	33.35 x 63.50	50
ST50-20A	Amber glass vial pre-assembled with stopper and aluminum crimp seal	1.7 (50)	20	N/A	1.50 x 2.688	38.1 x 68.28	50
ST100-20A	Amber glass vial pre-assembled with stopper and aluminum crimp seal	3.4 (100)	20	N/A	1.75 x 3.75	44.45 x 95.25	50

► Thermo Scientific Silanized Glassware Products

clear and amber glass



Deactivated sites on the surface of the glass allow for maximum recovery of trace analytes.

Our line of ready-to-use silanized vials and culture tubes save valuable time and minimize costs when performing quantitative analysis or storing materials. Use for trace organic analysis, processing of materials prone to glass adhesion or extraction glassware needs.

details

- Barrier coating provides protection against alkalinization of stored materials
- Save valuable personnel time and minimize waste costs
- Certificate of conformance included

Silanized Glassware Products

Cat. No.	Description	Capacity oz. (mL)	Closure Size (mm)	Liner	O.D. x H, in.	O.D. x H, mm	No. per Case
SCA-SV2-2	Clear glass vial 12x32 with closed-top closure	2 mL	8-425	PTFE	0.472 x 1.26	11.99 x 32.00	255
SCA-SV4-2	Clear glass vial 15x45 with closed-top closure	4 mL	13-425	PTFE	0.591 X 1.772	15.01 x 44.96	1000
CTS-1275	Clear 12x75 glass culture tubes (closures are not included)	8 mL	N/A	N/A	0.438 x 2.938	11.13 x 74.63	144
CTS-13100	Clear 13x100 glass culture tubes (closures are not included)	13 mL	N/A	N/A	0.500 x 3.938	12.70 x 100.03	144
CTS-16100	Clear 16x100 glass culture tubes (closures are not included)	20 mL	N/A	N/A	0.563 x 4.000	14.30 x 101.60	72
C39-20C/CT-S	Clear glass vial with solid closed-top septa closure	20 mL	24-414	PTFE / Silicone	1.083 x 2.244	27.51 x 57.00	72
CTS-16125-2	Clear 16x125 glass culture tubes (closures are not included)	25 mL	N/A	N/A	1.500 x 4.938	38.01 x 125.43	100
SAA-SV2-2	Amber glass vial 12X32 silanized with screw thread closure	2 mL	8-425	PTFE / Silicone	0.472 x 1.26	11.99 x 32.00	72
SCA-SV2-CT	Amber glass vial 12x32 with closed-top closure	2 mL	8-425	PTFE	0.472 x 1.26	11.99 x 32.00	255
SAA-SV4-2	Amber glass vial 15x45 with closed-top closure	4 mL	13-425	PTFE	0.591 X 1.772	15.01 x 44.96	72
EP608154-S	Amber glass vial with closure	4 mL	13-425	PTFE / Foam	0.591 X 1.772	15.01 x 44.96	24
EP608158-S	Amber glass vial with closure	8 mL	15-425	PTFE / Foam	0.669 x 2.362	16.00 x 59.99	24
239-20A/CT-S	Amber vial with closed top polypropylene closure	20 mL	24-414	PTFE / Silicone	1.125 x 2.25	28.60 x 57.15	72
C39-20A/CT-S	Amber glass vial with solid closed-top septa closure	20 mL	24-414	PTFE / Silicone	1.083 x 2.244	27.51 x 57.00	72
212-01A-S	Amber glass Boston round bottle with black closure	32 (1000)	33-430	PTFE / Silicone	3.70 X 8.10	93.98 x 205.74	12



Glassware Culture Tubes, Disposable*

Cat. No.	Description	Capacity oz. (mL)	Closure Size (mm)	Liner	O.D. x H, in.	O.D. x H, mm	No. per Case
STT-13100-S	Clear 13x100 screw thread glass tube (closures are not included)	13 mL	13-415	N/A	0.500 x 3.938	12.70 x 100.03	1000
STT-16100-S	Clear 16X100 screw thread glass tube (closures are not included)	20 mL	13-415	N/A	0.563 x 4.000	14.30 x 101.60	1000
STT-16125-S	Clear 16X125 screw thread glass tube (closures are not included)	25 mL	13-415	N/A	1.500 x 4.938	38.01 x 125.43	1000

*Type 1 borosilicate glass sold 1000 per case, 250 per inner pack.



► Thermo Scientific Nunc EasyFill Cell Factory Systems polystyrene



Nunc™ EasyFill™ Cell Factory™ system is a single-use, “out-of-the-box” system with a large, vented screw closure and versatile port design for pouring and aseptic filling.

To get started, simply pour the media directly into the EasyFill Cell Factory system’s large opening. The linear, multi-layer format promotes easy scalability and is ideal for both research and commercial-scale cell culture applications.

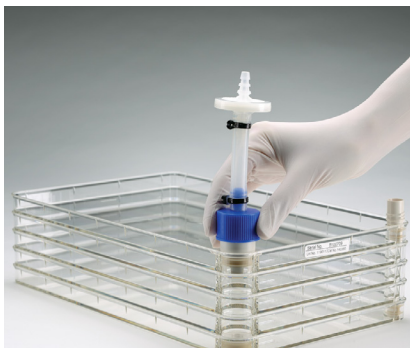
details

- Save valuable space – each EasyFill Cell Factory 10 holds the equivalent of 36-T175 flasks
- Enhance productivity with 5X faster fill and empty times vs. T175 flasks
- Achieve fast start-up – no accessories required with EasyFill Cell Factory systems
- Certified Nunclon Delta surface ensures consistent growth layer to layer, lot to lot

Nunc EasyFill Cell Factory Systems

Cat. No.	Type	No. of Layers	Culture Area, cm ²	No. per Pack	No. per Case
140000	EasyFill Cell Factory System	1	632	1	6
140250	EasyFill Cell Factory System	2	1264	1	6
140360	EasyFill Cell Factory System	4	2528	1	4
140400	EasyFill Cell Factory System	10	6320	1	2
140410	EasyFill Cell Factory System	10	6320	1	6
140440	EasyFill Cell Factory System	40	25,280	1	2

► Thermo Scientific Nunc EasyFill Cell Factory Accessories



Nunc™ EasyFill™ Cell Factory™ Accessories support the use of aseptic methods for fluid handling related to filling, inoculation, feeding and harvesting of the EasyFill Cell Factory system.

It is now easier than ever to create a Nunc EasyFill Cell Factory system for your specific application.

details

- Plug a media bag or tubing set into any Cell Factory system making connections easy
- All accessories are gamma irradiated and individually wrapped eliminating the need for in-house cleaning processes and validations
- Prevent build up of back pressure during filling application with vent filter assemblies



EasyFill adaptor closures



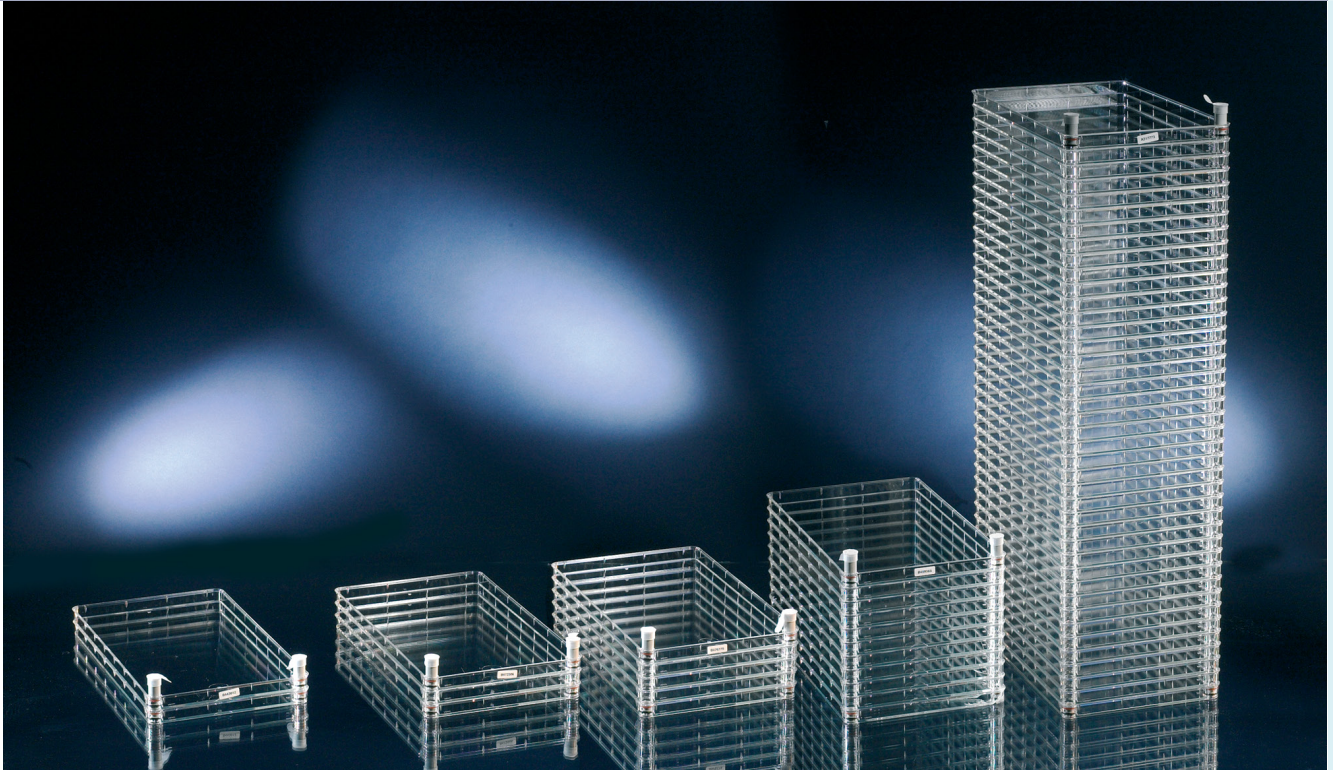
EasyFill filter assemblies



EasyFill vent caps

Nunc EasyFill Cell Factory Accessories

Cat. No.	Description	Material	No. per Pack	No. per Case
140065	EasyFill Cell Factory Adaptor closure with 1/2 in. Barb, Irradiated	High-density polyethylene	1	12
140085	EasyFill Cell Factory Closure with 1/4 in. Barb, Irradiated	High-density polyethylene	1	12
140086	EasyFill Cell Factory Closure with 3/8 in. Barb, Irradiated	High-density polyethylene	1	12
140067	EasyFill Cell Factory Filter Assembly, 37 mm, 1.0 µm, Irradiated	High-density polyethylene	1	2
140080	EasyFill Cell Factory Filter Assembly, 200 cm ² , 0.22 µm, Irradiated	High-density polyethylene	1	2
146008	Replacement Vent Cap; Sterile	High-density polyethylene	1	10



► Thermo Scientific Nunc Cell Factory Systems polystyrene

The original Nunc™ Cell Factory™ system is the proven solution for large-scale production of cells, vaccines and therapeutic proteins – with the same growth kinetics as laboratory-scale cell culture products.

Available in 1-, 2-, 4-, 10- and 40-tray versions, the ports of the original Cell Factory system make it easy to customize and create a closed system with the use of custom tubing assemblies that facilitate venting, filling and harvesting.

details

- Ideal for adherent cells
- Boost production efficiency with more surface area in a small footprint
- Reduce contamination risks with a closed system
- Experience faster results and lot-to-lot consistency
- Certified Nunclon™ Delta™ surface ensures consistent growth, layer to layer

Nunc Cell Factory Systems

Cat. No.	Type	No. of Layers	Culture Area, cm ²	No. per Pack	No. per Case
165250	Original Cell Factory System	1	632	1	8
167695	Original Cell Factory System	2	1264	1	6
140004	Original Cell Factory System	4	2528	1	10
164327	Original Cell Factory System	10	6320	1	2
170009	Original Cell Factory System	10	6320	1	6
139446	Original Cell Factory System	40	25,280	1	2

► Thermo Scientific Nunc Cell Factory Systems with Active Gassing polystyrene



Nunc™ Cell Factory™ Systems with Active Gassing ensure a controlled, contamination-free atmosphere in each culture tray by equally distributing the user-specified gas mixture.

The systems create an ideal environment for culturing oxygen-consuming and pH sensitive cells. Available in 4-, 10- and 40-tray models.

details

- Achieve greater yields with controlled cell culture environments
- Optimize production capacity without changing cell culture platforms
- Certified Nunclon Delta surface ensures consistent growth layer to layer, lot to lot

Nunc Cell Factory Systems with Active Gassing

Cat. No.	Type	No. of Layers	Culture Area, cm ²	No. per Pack	No. per Case
173239	Cell Factory System with Active Gassing	4	2528	1	10
173238	Cell Factory System with Active Gassing	10	6320	1	6
173240	Cell Factory System with Active Gassing	40	25,280	1	2



► Thermo Scientific Nunc Cell Factory Accessories



Filter adapter cap and 1.0 µm airvent filter

Nunc™ Cell Factory™ Accessories supports the use of aseptic methods for fluid handling relating to filling, inoculation, feeding and harvesting of the Cell Factory system.

These accessories enable the further development of applications requiring a more closed cell culture system, reducing the number of open interventions.

details

- Plug a media bag or tubing set to any Cell Factory system for enhanced aseptic connectivity for filling and harvesting
- Prevent build up of back pressure during filling application
- Venting options provide additional air venting when filling and harvesting by gravity or with a peristaltic pump



Airvent filters with HDPE connector



PC connector



Blue cover caps



Filling tubing set

Nunc Cell Factory Accessories

Cat. No.	Description	No. per Pack	No. per Case
173248	Airvent filter, 1.0 µm with HDPE connector, Sterile	1	2
179553	Airvent filter, 1.0 µm, Sterile	1	10
173249	Airvent filter, 0.22 µm, with HDPE connector, Sterile	1	2
167525	Filter Adaptor Cap; Sterile	1	20
170615	Blue Cover Cap; Sterile	2	40
140099	PC connector	10	10
171840	HDPE connector	10	10
173250	Teflon® connector, Autoclavable	2	2
140120	Cell Factory Filling Tubing Set, irradiated	1	2

Teflon® is a registered trademark of DuPont used under license by Nalge Nunc International Corp.

► Thermo Scientific Nunc Cell Factory Start-Up Kit



The Nunc™ Cell Factory™ Start-Up Kit supports the use of aseptic methods for fluid handling related to filling, inoculation, feeding and harvesting of the Cell Factory system.

These accessories enable the further development of applications requiring a more closed cell culture system, reducing the number of open interventions.

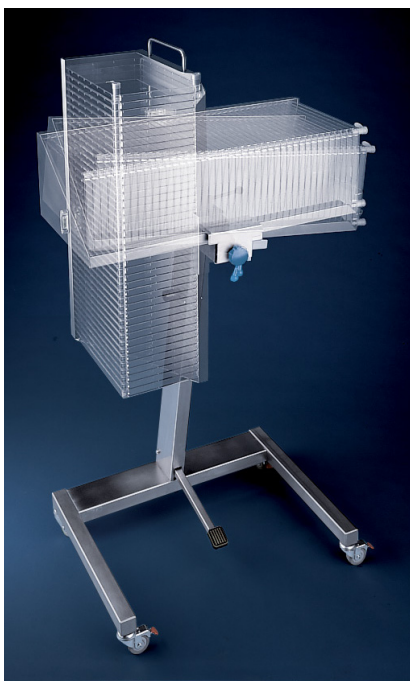
details

- Features several items routinely used in the setup of a cell factory, including HDPE connector, two cover caps, two blue sealing caps, No. 4210 bacterial air vent filter, tubing and clamp
- All items are sterile

Nunc Cell Factory Start-Up Kit

Cat. No.	Description
170769	Start-up kit for use with Nunc Cell Factory Systems

► Thermo Scientific Nunc Cell Factory Hand Manipulator stainless steel



Nunc™ Cell Factory™ Hand Manipulators are designed for the safe and efficient handling of Cell Factory 10 and 40 layer systems.

The Cell Factory Hand Manipulator is mobile and includes a foot brake for safe placement. The Cell Factory 10 Hand Manipulator is compact and ideal for use within in a biosafety cabinet.

details

- Constructed of stainless steel, designed for use in clean room environments

Nunc Cell Factory Hand Manipulator

Cat. No.	Description
176953	Cell Factory 40 Hand Manipulator
132752	Cell Factory 10 Hand Manipulator



► Thermo Scientific Nunc Automatic Cell Factory Manipulator (ACFM) stainless steel

Nunc™ ACFM automates the filling and harvesting of four Nunc Cell Factory™ 40 or 12 Nunc Cell Factory 10 systems.

details

- Constructed of AISI 316 8 mm stainless steel and designed for use in clean room environments
- For large scale cell culture and production of vaccines, cell therapeutics or other biological products
- Available with or without safety light curtain

Nunc Automatic Cell Factory Manipulator (ACFM)

Cat. No.	Description	Electrical Requirements
120351	ACFM GEN 10 w/ Safety Light Curtain and Membrane Control Panel	3/N/PE, 400V 50Hz
120352	ACFM GEN 10 w/ Membrane Control Panel	3/N/PE, 230V 60Hz
120353	ACFM GEN 10 w/ Membrane Control Panel	3/N/PE, 208V 60Hz
120354	ACFM GEN 10 w/ Membrane Control Panel	3/N/PE, 480V 60Hz
Accessories		
132847	Retrofit Safety light curtain for ACFM Gen 10	

Related products: Side Loading Rack with Cart for Cell Factory 40 System (Cat. No. 140503), Side Loading Rack with Cart for Cell Factory 10 Systems (Cat. No. 140504).

Compliance: The ACFM complies with safety requirements of the following standards and guidelines: EC Machinery Directive 2006/42/EC (Cat. No. 120351 only) and EC Machinery Directive 2004/108/EC.

► Thermo Scientific Nunc Cell Factory Shaker System

stainless steel



The Nunc™ Cell Factory™ Shaker System offers an automated solution for the detachment of cells from Nunc Cell Factory Systems.

details

- Eliminates traditional need for manual methods for cell detachment, such as shaking and pounding
- Performs a continuous horizontal accelerated and decelerated movement to the Cell Factory System
- Adjustable frequency of the shaking
- Designed to easily load and unload Cell Factory carts

Ordering Information: For use with Nunc Cell Factory Side Loading Rack with Cart, please order the Retrofit Clamping Kit (Cat. No. 120289).

Related products: Side Loading Rack with Cart for Cell Factory 40 System (Cat. No. 140503), Side Loading Rack with Cart for Cell Factory 10 Systems (Cat. No. 140504), Retrofit Clamping Kit for Racks for use with shaker (Cat. No. 120289).

Compliance: The Cell Factory Shaker complies with the safety requirements of the following standards and guidelines: Machinery Directive 98/37/EC, Low Voltage Directive 2006/96/EC, EMC Directive 2004/108/EC.

Nunc Cell Factory Shaker System

Cat. No.	Description	Electrical Requirements
132849	Cell Factory Shaker GEN 2	208.240V, 50/60Hz, Single Phase
120289	Retro Clamping Kit for Racks for use with Shaker	



► Thermo Scientific Nunc Cell Factory Incubators

stainless steel



Nunc™ incubator is a mobile solution for the incubation of Nunc Cell Factory™ Systems.

details

- Accommodates four racks of Cell Factory 40 or Cell Factory 10 Systems
- Incubator floor height accommodates the easy loading and unloading of Cell Factory carts
- Available with and without CO₂ control
- Maintains temperature 5°C above ambient to 50°C
- Maintains CO₂ 0-20% +/- 0.5% (Cat. No. 120300)
- Equipped with warning and alarm systems

Related products: Side Loading Rack with Cart for Cell Factory 40 System (Cat. No. 140503), Side Loading Rack with Cart for Cell Factory 10 Systems (Cat. No. 140504).

Compliance: Our incubators are manufactured in accordance with CE guidelines, and meet the requirements of IEC 6110.

Nunc Cell Factory Incubators

Cat. No.	Description	Electrical Requirements
120100	Cell Factory Incubator, Gen 5	208.240V, 50/60Hz, Single Phase
120300	Cell Factory Incubator with CO ₂ control, Gen 5	208.240V, 50/60Hz, Single Phase

► Thermo Scientific Nunc Cell Factory Racks and Carts

stainless steel



Nunc™ Cell Factory™ Rack and Carts are designed to perfectly integrate with all Nunc Cell Factory equipment.

details

- Constructed of AISI 316 stainless steel
- Designed for use in clean room environments
- Side loading design for easy loading and unloading
- Available for use with Cell Factory 40 and Cell Factory 10 Systems
- Holds four Cell Factory 40- or 12-Cell Factory 10 System

Nunc Cell Factory Racks and Carts

Cat. No.	Description
140503	Side Loading Rack with Cart for Cell Factory 40
140504	Side Loading Rack with Cart for Cell Factory 10
120289	Retro Clamping Kit for Racks for use with Shaker

► Thermo Scientific Nunc TufRol Roller Bottles

polystyrene, high-density polyethylene closures



Nunc™ TufRol™ PS Roller Bottles provide reliability and reproducibility necessary for laboratory and industrial scale applications, including vaccines, cell culture expansion and the production of other biologics.

Minimize validation of cell culture scale-up processes from plates to flasks to roller bottles by choosing a family of products that utilize polystyrene materials.

details

- One-piece seamless design reduces possibility of leaking through a seam
- Shallow and deep indents at bottom make the roller bottle excellent for both manual and automated handling
- Proprietary manufacturing process gives greater impact resistance
- Vertical pleat orientation facilitates emptying and reduces retention of product



Nunc TufRol Roller Bottles

Cat. No.	Description	Surface Area, cm ²	No. per Pack	No. per Case
181702	Roller Bottle, smooth surface, vented	850	2	20
182702	Roller Bottle, smooth surface	850	2	20
182720	Roller Bottle, smooth surface	850	20	20
182744	Roller Bottle, smooth surface	850	20	20, Double-bagged
183302	EZ Roller Bottle, smooth surface, shallow indent, vented	850	2	20
183902	EZ Roller Bottle, smooth surface, deep indent, vented	850	2	20
184302	EZ Roller Bottle, smooth surface, shallow indent	850	2	20
184344	EZ Roller Bottle, smooth surface, shallow indent	850	20	20, Double-bagged
184902	EZ Roller Bottle, smooth surface, deep indent	850	2	20, Double-bagged
184920	EZ Roller Bottle, smooth surface, deep indent	850	20	20
184944	EZ Roller Bottle, smooth surface, deep indent	850	20	20, Double-bagged
141744	Roller Bottle, pleated surface, vented	1450	20	20, Double-bagged
142720	Roller Bottle, pleated surface	1450	20	20
142744	Roller Bottle, pleated surface	1450	20	20, Double-bagged



Replacement Closures for Nunc TufRol Roller Bottles

Cat. No.	Description	Material	No. per Pack	No. per Case
111250	Vented Closures	HDPE	250	500
112250	Easy on/off Closures	HDPE	250	500



► Thermo Scientific Nunc InVitro Roller Bottles

polyethylene terephthalate copolyester, high-density polyethylene closures

Nunc™ InVitro™ PETG Roller Bottles increase cell expansion and product yield without the need to purchase additional production equipment or increase labor. For laboratory and industrial scale applications including vaccines, cell culture expansion and the production of other biologics.

details

- Molded of durable, virtually unbreakable PETG, offering the safest roller bottle solution on the market today
- Can be frozen down to -40°C; supports freeze/thaw cell release methods, reducing reliance on trypsin
- Wide range of surface areas from 1050 cm² to 4200 cm², providing solutions for all scales
- Quick-action ergonomic closure reduces wrist strain and increases productivity
- Lot number on every bottle for full traceability

Nunc InVitro Roller Bottles

Cat. No.	Description	Surface Area, cm ²	No. per Pack	No. per Case
1060-05	1.2X Roller Bottle, smooth surface	1050	5	20
1060-20	1.2X Roller Bottle, smooth surface	1050	20	20
1060-50	1.2X Roller Bottle, smooth surface, Poly-D-Lysine coated	1050	20	20
1060-85	1.2X Roller Bottle, smooth surface, vented	1050	5	20
1760-20	2X Roller Bottle, pleated surface	1700	20	20
1860-22	1XL Roller Bottle, smooth surface	1800	22	22
2160-05	2.5X Roller Bottle, pleated surface	2100	5	20
2160-20	2.5X Roller Bottle, pleated surface	2100	20	20
4260-22	5X Roller Bottle, pleated surface	4200	22	22

Thermo Scientific Products –
meeting the challenges of science and industry

shakers

Reproducible results, each and every time.

Thermo Scientific MaxQ shakers ensure your effectiveness and productivity with a wide range of analog and digital shaker offerings. With a product portfolio that includes incubated and refrigerated offerings, available as stackable benchtop and floor model units, we make it easy to find the right shaker solution for your laboratory. Features like our triple eccentric drive mechanisms provide continuous 24-hour operation, and allow you to shake large and uneven loads smoothly and uniformly.

MaxQ shakers are a perfect fit to a broad range of applications, from general mixing, cell culture and solubility studies to bacterial suspensions, staining/destaining and hybridization.



For more product information, go to:
www.thermoscientific.com/shakers

► Thermo Scientific Nalgene Sterile Single-Use Erlenmeyer Flasks

polyethylene terephthalate copolyester, high-density polyethylene closures



Nalgene™ PETG Flasks are ideal for suspension cell culture, media preparation, mixing and storage.

The sterile, single-use flasks are made of light, break resistant, crystal clear PETG. All sizes are available vented or non-vented and with plain bottom or with baffled bottom for use on the bench top or shaker table.

details

- Sterile and single use: reduce contamination risk
- Robust and break resistant: increase personal safety
- Collapses when autoclaved: reduce bio hazardous waste
- Graduated for quick volume assessment
- Supported by extensive validation documentation

Nalgene Sterile Single Use Erlenmeyer Flasks

Cat. No.	Working Capacity, mL	Neck Finish, mm	Bottom Style	No. per Pack	No. per Case
Vented Closure					
4115-0125	125	38-430	Plain	1	24
4115-0250	250	38-430	Plain	1	12
4115-0500	500	45-430	Plain	1	12
4115-1000	1000	45-430	Plain	1	6
4115-2000	2000	45-430	Plain	1	4
4115-2800	2800	70	Plain	1	4
4116-0125	125	38-430	Baffled	1	24
4116-0250	250	38-430	Baffled	1	12
4116-0500	500	45-430	Baffled	1	12
4116-1000	1000	45-430	Baffled	1	6
4116-2000	2000	45-430	Baffled	1	4
4116-2800	2800	70	Baffled	1	4
Solid Closure					
4112-0125	125	38-430	Plain	1	24
4112-0250	250	38-430	Plain	1	12
4112-0500	500	45-430	Plain	1	12
4112-1000	1000	45-430	Plain	1	6
4112-2000	2000	45-430	Plain	1	4
4112-2800	2800	70	Plain	1	4
4113-0125	125	38-430	Baffled	1	24
4113-0250	250	38-430	Baffled	1	12
4113-0500	500	45-430	Baffled	1	12
4113-1000	1000	45-430	Baffled	1	6
4113-2000	2000	45-430	Baffled	1	4
4113-2800	2800	70	Baffled	1	4

► **Thermo Scientific Nalgene Vented Closures for Sterile Single-Use Erlenmeyer Flasks**
high-density polyethylene



Nalgene™ Vented Closures for Sterile Single Use Erlenmeyer Flasks provide sterile gas exchange for shaker and suspension cell cultures.

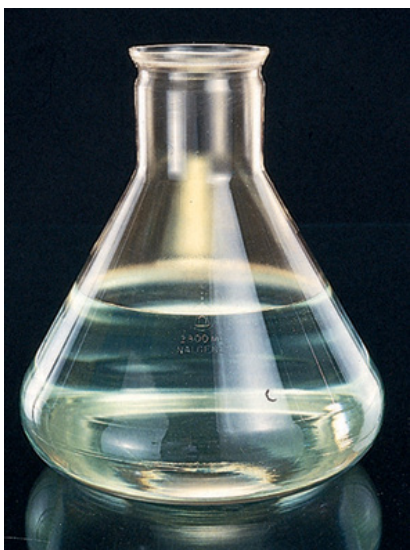
details

- Blue HDPE with hydrophobic 0.2 µm PTFE membrane
- Permits gas exchange without unscrewing closure
- Sterile

Nalgene Vented Closures for Sterile Single Use Erlenmeyer Flasks

Cat. No.	Description	No. per Pack	No. per Case
4114-0038	Vent Closures for 125 mL and 250 mL Erlenmeyer Flasks	1	12
4114-0045	Vent Closures for 500 mL, 1 L and 2 L Erlenmeyer Flasks	1	12

► **Thermo Scientific Nalgene Fernbach Culture Flask**
polycarbonate



Nalgene™ Fernbach Culture Flask is constructed of durable, transparent polycarbonate.

details

- Break-resistant, transparent PC; safer than glass alternatives
- Fernbach design supports better aeration for the culturing of microorganisms
- For leakproof seal, use No. 12 rubber stopper

Nalgene Fernbach Culture Flask

Cat. No.	Working Capacity, L	No. per Pack	No. per Case
4105-2800	2.8	1	4

► Thermo Scientific Nalgene Magnetic Culture Vessel

polycarbonate, polypropylene closures, Teflon® TFE stir bar, polypropylene/TFE stirring assembly



Nalgene™ Magnetic Culture Vessels are designed for efficient top-to-bottom mixing at low speeds.

Lightweight and break resistant, these vessels are excellent for use on magnetic stir plates. Two magnetic stir bars are included – small for bacteria and large for mammalian cells.

details

- Includes two ports for easy access to cultures
- Magnetic stir bar keeps cells suspended at low stirring speeds, minimizing shear
- Adjustable impeller height supports process modifications
- Molded of lightweight and durable PC; safer than glass alternatives

Teflon® is a registered trademark of DuPont used under license by Nalge Nunc International Corp.

Nalgene Magnetic Culture Vessel

Cat. No.	Working Capacity, L	No. of Ports	No. per Case
2605-0001	1	2 x 38-430	1

► Thermo Scientific Nalgene Culture Vessel with Ports

polycarbonate, white polypropylene closures



Nalgene™ Culture Vessels feature four ports supporting easy access to your suspension cultures. Economical, lightweight and break-resistant.

details

- Molded of transparent PC for easy viewing of your cultures
- Graduated in 0.5 L increments from 3 to 12 L
- For use with overhead drive mixers and lower assemblies for top to bottom mixing
- Port accessories are available; ports accept any Nalgene 38-430 size closure
- Non-cytotoxic, autoclavable and USP Class VI compliant

Nalgene Culture Vessel with Ports

Cat. No.	Working Capacity, L	No. of Ports	No. per Case
2600-0012	12	4 x 38-430	1

► Thermo Scientific Nalgene Probe Adapter Closure

polypropylene, silicone gasket



Nalgene™ Probe Adapter Closures allow for insertion of 7 to 14 mm diameter probes into Thermo Scientific Nalgene Culture Vessels and Bottles with 38-430 neck finishes.

Provides controlled access to the interior of culture vessels.

details

- Molded of autoclavable PP; ready for in-house sterilization
- Includes a silicone gasket to ensure a leakproof seal
- Allows insertion of 7 to 14 mm diameter probes into 1 and 12 L culture vessels
- Ideal for use with any Nalgene bottle or culture vessel with a 38-430 neck finish

Nalgene Probe Adapter Closure

Cat. No.	Description	No. per Case
2145 0384	38-430 Probe Adaptor Closure	2

► Thermo Scientific Nalgene Closures with Barbed Bulkhead Fittings

polypropylene



Nalgene™ Closures with Barbed Bulkhead Fittings support the integration of tubing sets to Nalgene culture vessels.

Promotes the customization of Nalgene culture vessels for aseptic transfer of liquids.

details

- Size 38 mm-430 closures are pre-drilled allowing for easy, safe in-house assembly
- Barbed bulkhead fittings also sold separately (Cat. Nos. 6149-0001 and 6149-0002)
- Molded of autoclavable PP, ready for in-house sterilization

Nalgene Closures with Barbed Bulkhead Fittings

Cat. No.	Description	No. per Case
DS2167-0001	38-430 closure with 1/2 in. O.D. barbed fitting	4
DS2167-0002	38-430 closure with 1/4 in. O.D. barbed fitting	4

▶ Thermo Scientific Nalgene Magnetic Carboy Stirrer

polyvinylidene fluoride, stainless steel-reinforced shaft, Teflon® TFE stir bar, TFE, impeller, polypropylene screw closure



Nalgene™ Magnetic Carboy Stirrer is used with Nalgene 10 L and 20 L carboys for low-speed mixing of high volumes of media and buffer solution.

Adjusts easily to fit either a 10 L or 20 L Nalgene carboy with an 83B size closure. Supplied with a closure and two impellers. Eliminates the need to retrieve magnets from your solution.

details

- Provides low-speed mixing of high volumes of media and buffer solution
- Fits 10 L or 20 L Nalgene carboys with 83B closure
- For use with a magnetic stir plate (not included)
- Autoclavable

Notes: Includes closure and two impellers.

Teflon® is a registered trademark of DuPont used under license by Nalge Nunc International Corporation.

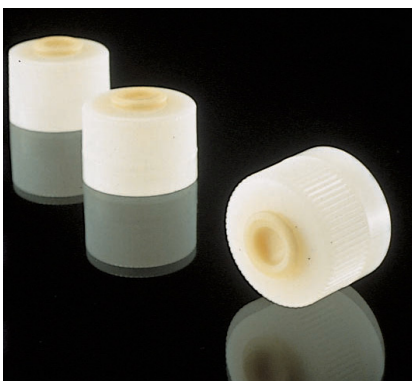
Nalgene Magnetic Carboy Stirrer

Cat. No.	Length, mm	No. per Case
DS2227-0020	588	1

Specifications	
Closure size, mm	83B
Shaft O.D.	13 mm
Shaft Length	588 mm
Stir Bar Diameter	13 mm
Stir Bar Length	75 mm

▶ Thermo Scientific Nalgene Autoclavable Septum Closures

thermoplastic elastomer



Nalgene™ Autoclavable Septum Closures allow aseptic injection of reagent or sample withdrawal without compromising sterility or integrity of contents.

Suitable for use with any bottle or container with 38-430 neck, including Nalgene culture vessels.

details

- Use with 18-gauge or smaller needles for aseptic injection of reagent or sample withdrawal without compromising sterility or integrity of contents
- Autoclavable

Alerts: For laboratory use only; not for in-vitro diagnosis or parenterals.

Nalgene Autoclavable Septum Closures

Cat. No.	Description	No. per Case
DS2168-0384	38-430 Autoclavable Septum Closures	12

Thermo Scientific Products –
meeting the challenges of science and industry



Nalgene™ Bottles and Carboy Selection Guide

Thermo Scientific Nalgene Bottle, Carboy and Vial Selection Guide

It's easy to take for granted the containers you entrust with your valuable samples and solutions. But not all bottles are created equal. Nalgene is the #1 choice, with more than 3,000,000 safely at work in laboratories around the world. This guide will help you to select a container matching your needs. Enter your criteria and see the range of Thermo Scientific Nalgene bottles that match your criteria.

Found 673 bottles matching your criteria - scroll down to view the results

Chemical Compatibility: None
 Storage Time: Any
 Material/Resin: Any
 Container Contents: Any
 Volume: Any mL
 Application Temperature Range: Any
 Min. temp. (degrees centigrade): Any
 Max. temp. (degrees centigrade): Any
 Ambient room temperature: Any
 Shape: Any
 Mouth Size: Any mm
 Color: Any
 Autoclavable: Any Yes No
 Spigot/Drain: Any Yes No
 Air shipment: Any Yes No
 Standard Quality Certificate: Any Yes No

Cat. No.	Description	Nominal Volume	Material	Dimensions
1600-0001	Narrow-Mouth Bottle FEP	30 mL	FEP	32 x 39 x 100 mm
1600-0002	Narrow-Mouth Bottle FEP	60 mL	FEP	39 x 46 x 100 mm
1600-0004	Narrow-Mouth Bottle FEP	125 mL	FEP	46 x 59 x 100 mm
1600-0008	Narrow-Mouth Bottle FEP	250 mL	FEP	60 x 72 x 100 mm
1600-0016	Narrow-Mouth Bottle FEP	500 mL	FEP	72 x 90 x 100 mm
1600-0032	Narrow-Mouth Bottle FEP	1000 mL	FEP	90 x 121 x 100 mm
1600-0064	Narrow-Mouth Bottle PFA	2000 mL	PFA	121 x 152 x 100 mm
1630-0004	Narrow-Mouth Bottle PFA	125 mL	PFA	46 x 59 x 100 mm
1630-0008	Narrow-Mouth Bottle PFA	250 mL	PFA	59 x 72 x 100 mm
1630-0016	Narrow-Mouth Bottle PFA	500 mL	PFA	72 x 90 x 100 mm
1630-0032	Narrow-Mouth Bottle PFA	1000 mL	PFA	90 x 121 x 100 mm

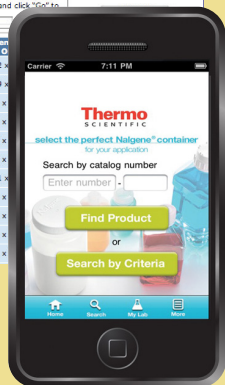
Thermo Scientific Nalgene bottles and carboys set the standard for quality and superior performance, protecting your valuable liquids. So exceptional, they come with a leakproof guarantee. So trusted, millions are used in laboratories around the world.

See how easy it is to choose the best bottles, carboys and vials for your applications.

Visit the Nalgene Bottle and Carboy Selection Guide by using the QR code below or online at

www.thermoscientific.com/nalgenecontainers

– or get the app at the iTunes store or Android Market.





► Thermo Scientific Nalgene Top Works Fluid Transfer Systems



Nalgene™ Top Works™ Fluid Transfer Systems are aseptic handling solutions for pharmaceutical, biotechnology and laboratory liquid transfer applications.

Customize Thermo Scientific Nalgene bottles and carboys with closures, including platinum cured silicone stopper inserts and tubing. Available with various ports, tubing lengths and closure sizes.

details

- Closures are specifically designed to mate with most Nalgene bottles and carboys
- Leakproof systems for secure, aseptic handing of high-valued products compared to pouring
- Includes long tubing lengths, both inside and outside the container to support the intergration to most Nalgene bottles and carboys
- Ready to accept additional fluid transfer components such as aseptic connectors and air vent filters

Ordering Information: One system per case.

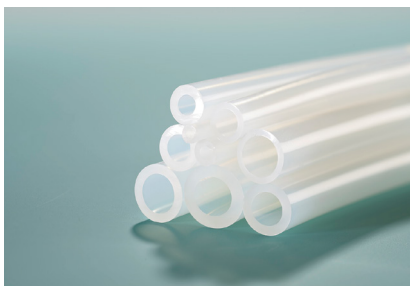
Compliance: USP Class VI.

Nalgene Top Works Fluid Transfer Systems

Cat. No.	Closure Size, mm	No. of Ports	Port I.D. Size, in. (mm)	No. per Case
2135-3803	38-430	3	1-1/4 (6.35), 2-1/8 (3.18)	1
2135-5300	53B	None (solid insert)	–	1
2135-5302	53B	2	2-1/4 (6.35)	1
2135-5303	53B	3	1-1/8 (3.18), 2-1/4 (6.35)	1
2135-8300	83B	None (solid insert)	–	1
2135-8302	83B	2	1-1/4 (6.35)	1
2135-8303	83B	3	1-3/8 (9.52), 2-1/4 (6.35)	1
2132-1003†	GL45 PSF	3	1-1/8 (3.18), 2-1/4 (6.35)	1

† GL45 closure system for Schott™, Corning™ and Wheaton™ media bottles

► Thermo Scientific Nalgene Pharma-Grade Platinum-Cured Silicone Tubing



Nalgene™ Pharma-Grade Platinum-Cured Silicone Tubing is flexible, durable and translucent. This high-purity tubing is designed for a variety of pumps and transfer applications, including pharmaceutical, laboratory and bioprocess manufacturing.

details

- Tasteless, odorless, non-cytotoxic and non-hemolytic
- Contains no phthalate plasticizers or peroxides that can leach out into transported fluid
- Low-binding surface minimizes absorption of proteins and food products
- Autoclavable; also can be sterilized by gamma radiation, EtO and chemical procedures
- Durometer hardness: Shore A, 50

Ordering Information: Double-bagged in case of 50 ft. (15.2 m).

Compliance: Meets USP<87> Cytotoxicity (Agar Diffusion and MEM Elution methods); USP<88> Class VI; USP<661>Physicochemical Tests; ISO10993-3 Bacterial Mutagenicity - Ames Assay; ISO10993-4 Hemolysis Direct Contact, EP 3.1.9 Silicone Elastomer for Closures and Tubing, and FDA CFR 177.2600 Rubber Articles Intended for Repeated Use.

Notes: Not intended for invasive use.

Nalgene Pharma-Grade Platinum-Cured Silicone Tubing

Cat. No.	Description	ID x OD x Wall, in. (mm)	Critical dimensions				Concentricity TIR Max. (in.)	Working PSI	Tubing length ft. (m)
			ID	TOL	WALL	TOL			
8600-0020	Silicone tubing	1/16 x 1/8 x 1/32 (1.59 x 3.18 x 0.79)	0.062 +/- 0.005		0.032 +/- 0.002		0.002	18	50 (15.2)
8600-0030	Silicone tubing	1/8 x 1/4 x 1/16 (3.18 x 6.35 x 1.59)	0.125 +/- 0.005		0.062 +/- 0.005		0.005	18	50 (15.2)
8600-0040	Silicone tubing	3/16 x 5/16 x 1/16 (4.76 x 7.94 x 1.59)	0.188 +/- 0.005		0.062 +/- 0.005		0.005	14	50 (15.2)
8600-0050	Silicone tubing	3/16 x 3/8 x 3/32 (4.76 x 9.53 x 2.38)	0.188 +/- 0.005		0.094 +/- 0.003		0.003	18	50 (15.2)
8600-0060	Silicone tubing	1/4 x 3/8 x 1/16 (6.35 x 9.53 x 1.59)	0.250 +/- 0.010		0.062 +/- 0.003		0.003	12	50 (15.2)
8600-0070	Silicone tubing	1/4 x 7/16 x 3/32 (6.35 x 11.11 x 2.38)	0.250 +/- 0.010		0.094 +/- 0.003		0.003	15	50 (15.2)
8600-0080	Silicone tubing	1/4 x 1/2 x 1/8 (6.35 x 12.7 x 3.18)	0.250 +/- 0.010		0.125 +/- 0.005		0.005	18	50 (15.2)
8600-0100	Silicone tubing	5/16 x 1/2 x 3/32 (7.94 x 12.7 x 2.38)	0.312 +/- 0.010		0.094 +/- 0.003		0.003	13	50 (15.2)
8600-0120	Silicone tubing	3/8 x 1/2 x 1/16 (9.53 x 12.7 x 1.59)	0.375 +/- 0.015		0.062 +/- 0.002		0.002	9	50 (15.2)
8600-0130	Silicone tubing	3/8 x 9/16 x 3/32 (9.53 x 14.29 x 2.38)	0.375 +/- 0.015		0.094 +/- 0.003		0.003	12	50 (15.2)
8600-0140	Silicone tubing	3/8 x 5/8 x 1/8 (9.53 x 15.88 x 3.18)	0.375 +/- 0.015		0.125 +/- 0.005		0.005	14	50 (15.2)
8600-0190	Silicone tubing	1/2 x 11/16 x 3/32 (12.7 x 17.46 x 2.38)	0.500 +/- 0.015		0.094 +/- 0.005		0.005	10	50 (15.2)
8600-0200	Silicone tubing	1/2 x 3/4 x 1/8 (12.7 x 19.05 x 3.18)	0.500 +/- 0.015		0.125 +/- 0.005		0.005	12	50 (15.2)
8600-0260	Silicone tubing	5/8 x 7/8 x 1/8 (15.88 x 22.23 x 3.18)	0.625 +/- 0.015		0.125 +/- 0.005		0.005	10	50 (15.2)
8600-0310	Silicone tubing	3/4 x 1 x 1/8 (19.05 x 25.4 x 3.18)	0.750 +/- 0.020		0.125 +/- 0.005		0.005	10	50 (15.2)

► Thermo Scientific Nalgene Pharma-Grade Platinum-Cured Silicone Tubing for Peristaltic Pumps



Nalgene™ Pharma-Grade Platinum-Cured Silicone Tubing for Peristaltic Pumps is flexible, durable and translucent. This high-purity tubing is designed for a variety of pumps and transfer applications, including pharmaceutical, laboratory and bioprocess manufacturing.

details

- Tasteless, odorless, non-cytotoxic and non-hemolytic
- Contains no phthalate plasticizers or peroxides that can leach out into transported fluid
- Low-binding surface minimizes absorption of proteins and food products
- Autoclavable; also can be sterilized by gamma radiation, EtO and chemical procedures
- Durometer hardness: Shore A, 50

Ordering Information: Double-bagged in case of 25 ft. (7.6 m).

Compliance: Meets USP<87> Cytotoxicity (Agar Diffusion and MEM Elution methods); USP<88> Class VI; USP<661>Physicochemical Tests; ISO10993-3 Bacterial Mutagenicity - Ames Assay; ISO10993-4 Hemolysis Direct Contact, EP 3.1.9 Silicone Elastomer for Closures and Tubing , and FDA CFR 177.2600 Rubber Articles Intended for Repeated Use

Notes: Not intended for invasive use.

Nalgene Pharma-Grade Platinum-Cured Silicone Tubing for Peristaltic Pumps

Cat. No.	Description	ID x OD x Wall, in. (mm)	Critical dimensions				Concentricity TIR Max. (in.)	Working PSI	Tubing length ft. (m)
			ID	TOL	WALL	TOL			
8600-3015	Silicone Pump Tubing; Pump size #15		0.188 +/- 0.008		0.100 +/- 0.005		0.005	11	25 (7.6)
8600-3016	Silicone Pump Tubing; Pump size #16		0.125 +/- 0.008		0.063 +/- 0.005		0.005	11	25 (7.6)
8600-3017	Silicone Pump Tubing; Pump size #17		0.250 +/- 0.005		0.063 +/- 0.005		0.005	7	25 (7.6)
8600-3018	Silicone Pump Tubing; Pump size #18		0.313 +/- 0.005		0.063 +/- 0.005		0.005	6	25 (7.6)
8600-3024	Silicone Pump Tubing; Pump size #24		0.250 +/- 0.005		0.100 +/- 0.005		0.005	9	25 (7.6)
8600-3025	Silicone Pump Tubing; Pump size #25		0.188 +/- 0.005		0.063 +/- 0.003		0.003	9	25 (7.6)
8600-3173	Silicone Pump Tubing; Pump size #73		0.375 +/- 0.015		0.063 +/- 0.010		0.010	8	25 (7.6)
8600-3182	Silicone Pump Tubing; Pump size #82		0.500 +/- 0.015		0.063 +/- 0.010		0.010	8	25 (7.6)

► Thermo Scientific Nalgene Braided Platinum-Cured Silicone Tubing



Nalgene™ Braided Platinum-Cured Silicone Tubing is durable, high-purity tubing designed for a variety of pump and transfer applications including pharmaceutical, laboratory, bioprocess manufacturing and food and beverage applications.

Manufactured with interwoven polyester braid for added safety, pressure and kink resistance.

details

- Contains no phthalate plasticizers or peroxides that can leach out into transported fluid
- Low-binding surfaces minimizes absorption of proteins and food products
- Tasteless, odorless, non-cytotoxic, non-pyrogenic, and non-hemolytic
- Autoclavable; also can be sterilized by gamma radiation, ETO and chemical procedures
- Durometer hardness: Shore A, 65

Ordering Information: Double-bagged in 25 ft. (7.6 m) cases.

Compliance: Meets FDA, USDA, U.S. Pharmacopeia Class VI, 24th Edition requirements for plastic materials; and 3A sanitary standards.

Nalgene 65 Braided Platinum-Cured Silicone Tubing

Cat. No.	I.D. x O.D. x Wall, in. (mm)	Max. Press. psig		Length per Case, ft. (m)
		at 73°F; 23°C	at 320°F; 160°C	
8061-3070	1/4 x 9/16 x 5/32 (6.35 x 14.29 x 3.97)	156	78	25 (7.6)
8061-3130	3/8 x 21/32 x 5/32 (9.52 x 16.67 x 3.97)	136	68	25 (7.6)
8061-3190	1/2 x 13/16 x 5/32 (12.7 x 20.64 x 3.97)	126	63	25 (7.6)

FH pumps & flowmeters

Proven leadership in fluid handling and flow control technology.

Designed to handle a wide range of fluids, from the highest purity to extremely caustic solutions, our pumps are used in a broad range of critical applications that include cell-culture, tangential flow filtration, chromatography, dispensing and more.

Our pumps deliver valuable features and benefits to ensure reliable, long-term performance:

- Ergonomic design
- Broad operating range
- Ease of use and maintenance



For more product information, go to:
www.thermoscientific.com/fluidhandling

► Thermo Scientific Nalgene Quick-Filling/Venting Closures

polypropylene, TPE gasket



Nalgene™ Quick Filling/Venting closures feature quick-disconnect fittings with tubulation for attachment to the tubing of choice.

Customizable ported 83B closure features panel-mounted, quick-disconnect fittings and inside/outside barbed fittings. Designed as a ready-made alternative to cumbersome in-house filling/dispensing solutions.

details

- Available in 2 or 3 port styles for 1/4 or 3/8 in. (6.35 mm or 9.53 mm) tubing – offering an ideal platform for customization of your Nalgene Bottle or Carboy
- Container integrity is assured with internal valve style quick-disconnect fittings
- Ideal for use in vacuum systems with Nalgene Heavy-Duty Vacuum Carboys and Bottles (Cat. Nos. 2226 and 2126)
- Use with Nalgene 180 heavy-wall tubing (Cat. Nos. 8000-0145 or 8000-0065)
- Alternative and replacement fittings are available for further customization options (Cat. Nos. 2159)

Disclaimer: Use with heavy-wall/vacuum tubing. Not recommended for vacuum use with lighter weight containers. Fitting-to-socket seals will not hold vacuum after multiple autoclavings.

Nalgene Quick-Filling/Venting Closures

Cat. No.	Hose Barb I.D., in. (mm)	No. of Ports	No. per Case
2158-0021	1/4 (6.35)	2	1
2158-0022	3/8 (9.53)	2	1
2158-0031	1/4 (6.35)	3	1
2158-0032	3/8 (9.53)	3	1

► Thermo Scientific Nalgene Replacement Coupling Inserts for Quick Filling/Venting Closure

polypropylene



Nalgene™ Replacement Coupling Inserts support one-handed connection and disconnection when applied to mating coupling bodies.

Male, barbed quick-disconnect replacement coupling inserts for use with Nalgene Quick Filling/Venting Closures.

details

- For use with Nalgene Quick Filling Venting Closures (Cat. No. 2158)
- Promotes fewer leakpoints and faster installations

Notes: 1/4 and 3/8 in. coupling inserts are not interchangeable.

Nalgene Replacement Coupling Inserts for Quick Filling/Venting Closure

Cat. No.	Tubing I.D., in. (mm)	No. per Case
Straight		
2159-0001	1/4 (6.35)	6
2159-0002	3/8 (9.53)	6
Elbow		
2159-0011	1/4 (6.35)	6
2159-0012	3/8 (9.53)	6

▶ Thermo Scientific Nalgene Filling/Venting Closures

white polypropylene, TPE gasket, TPE port caps, platinum-cured silicone tubing



Nalgene™ Filling/Venting Closures are aseptic handling solutions for pharmaceutical, biotechnology and laboratory liquid transfer applications.

Available for use with Nalgene bottles and carboys with either 53B or 83B closures, including pre-mounted lengths of platinum-cured silicone tubing for easy customization of bottles and carboys.

details

- Ready to accept additional fluid transfer components such as aseptic connectors and air vent filters
- Closures are specifically designed to mate with most Nalgene bottles and carboys
- Leakproof systems for secure, aseptic handling of high-valued products compared to pouring
- Autoclavable

Includes: Nalgene platinum-cured silicone tubing and TPE port caps.

Nalgene Filling/Venting Closures

Cat. No.	Tubing I.D., in. (mm)	Closure Size, mm	No. per Case
2162-0531	1/4 (6.35)	53	6
2162-0831	1/4 (6.35)	83	6
2162-0830	1/2 (12.7)	83	6

▶ Thermo Scientific Nalgene Barbed Bulkhead Fittings

polypropylene fittings, acetal nuts, silicone gaskets, TPE port caps



Nalgene™ Barbed Bulkhead Fittings promote the customization of most Nalgene bottle and carboy closures for aseptic transfer of liquids.

details

- 53B closures will accept (two) 1/4 inch fittings
- Fittings are barbed at both ends to accept tubing inside and outside the container
- Autoclavable

Includes: Instructions, drilling template and a set of two panel-mount barbed fitting, acetal nuts and silicone gaskets.

Nalgene Barbed Bulkhead Fittings

Cat. No.	Tubing I.D., in. (mm)	No. per Pack	No. per Case
6149-0001	1/2 (13)	2	24
6149-0002	1/4 (6.35)	2	24

► Thermo Scientific Nalgene Vacuum Check Valve and Positive Connector

high-density polyethylene; silicone diaphragm



Nalgene™ Vacuum Check Valves prevent back pressure with aspirator-type vacuum pumps.

Work best between 10- and 28 in. Hg. Designed for use with 1/4 in. (6.35 mm) – 5/16 in. (7.94 mm) I.D. tubing.

details

- 2-piece design, easy to disassemble for cleaning
- Includes silicone diaphragm for prevention of back pressure

Notes: Not for use with liquids.

Nalgene Vacuum Check Valve and Positive Connector

Cat. No.	Description	No. per Pack	No. per Case
6120-0010	Vacuum Check Valve for 1/4 in. (6.4 mm) to 5/16 in. (7.9 mm) I.D. Tubing	6	72

► Thermo Scientific Nalgene T-Type Tubing Connectors

polypropylene



Nalgene™ T-Type Tubing Connectors are molded of polypropylene resin free of animal derived components.

Non-tapered hose barbs maximize liquid flow.

details

- Double bagged to maintain cleanliness
- Autoclavable

Nalgene Tubing T-Type Connectors

Cat. No.	Fits Tubing I.D., in. (mm)	No. per Pack	No. per Case
6151-0125	1/8 (3.18)	12	72
6151-0187	3/16 (4.76)	12	72
6151-0250	1/4 (6.35)	12	72
6151-0312	5/16 (7.94)	12	72
6151-0375	3/8 (9.53)	12	48
6151-0500	1/2 (12.7)	12	48

► Thermo Scientific Nalgene Y-Type Tubing Connectors

polypropylene



Nalgene™ Y-Type Tubing connectors are molded of polypropylene resin free of animal derived components.

Non-tapered hose barbs maximize liquid flow.

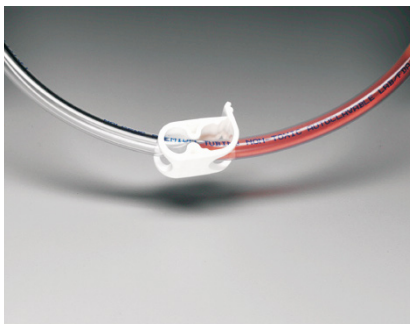
details

- Double bagged to maintain cleanliness
- Autoclavable

Nalgene Tubing Y-Type Connectors

Cat. No.	Fits Tubing I.D., in. (mm)	No. per Pack	No. per Case
6152-0125	1/8 (3.18)	12	72
6152-0187	3/16 (4.76)	12	72
6152-0250	1/4 (6.35)	12	72
6152-0312	5/16 (7.94)	12	72
6152-0375	3/8 (9.53)	12	48
6152-0500	1/2 (12.7)	12	48

► Thermo Scientific Nalgene Pinch Clamp polypropylene



Nalgene™ Polypropylene Pinch Clamp allows precise, one-handed regulation of fluid flow.

The molded one-piece design is ideal for use with Nalgene tubing.

details

- Polypropylene construction will not corrode or deform like metal clamps
- Pinch clamp for 1/4 in. to 7/16 in. (6.35 - 11.11 mm) O.D. tubing
- One-piece design contains no sharp edges
- Autoclavable

Nalgene Pinch Clamp

Cat. No.	Material	Fits Tubing O.D., in. (mm)	No. per Pack	No. per Case
6165-0002	Polypropylene	1/4 to 7/16 (6.35 to 11.11)	12	72

▶ Thermo Scientific Nalgene One-Way Stopcocks

polypropylene; Teflon® TFE plug



Nalgene™ Stopcocks promote accurate liquid flow control in liquid handling systems.

Ideal for use in developing in-house fluid transfer systems.

details

- Accepts 1/4 to 7/16 in. (6.35 to 11.11 mm) I.D. tubing
- One-way fluid path for accurate filling or dispensing
- Autoclavable

Teflon® is a registered trademark of DuPont used under license by Nalge Nunc International Corp.

Nalgene Stopcocks

Cat. No.	Plug Bore, mm	Fits Tubing I.D. in. (mm)	No. per Pack	No. per Case
6460-0002	2	1/4 to 5/16 (6.35 to 7.94)	1	6
6460-0004	4	1/4 to 5/16 (6.35 to 7.94)	1	6

▶ Thermo Scientific Nalgene Three-Way Stopcocks

polypropylene; Teflon® TFE plug



Nalgene™ Three-Way Stopcocks feature three tabulated ports arranged in a T shape.

Ideal for use in developing in-house fluid transfer systems.

details

- Accepts 1/4 to 7/16 in. (6.35 to 11.11 mm) I.D. tubing
- Use with any combination of two ports or all three ports
- Autoclavable

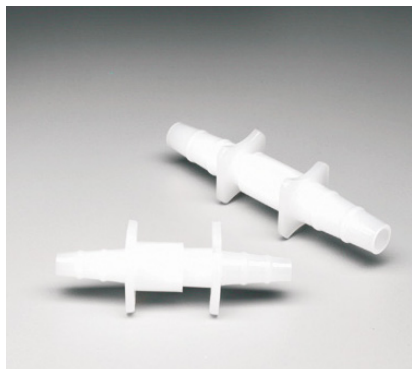
Teflon® is a registered trademark of DuPont used under license by Nalge Nunc International Corp.

Nalgene Three-way Stopcock

Cat. No.	Plug Bore, mm	Fits Tubing I.D., in. (mm)	No. per Pack	No. per Case
6470-0002	2	1/4 to 5/16 (6.35 to 7.94)	1	4
6470-0004	4	1/4 to 5/16 (6.35 to 7.94)	1	4

► Thermo Scientific Nalgene Quick Disconnects

high-density polyethylene



Nalgene™ Quick Disconnects provide a solution for rapid, smooth connections between two fluid paths.

Tubulations slide together snugly with a twist providing a fast, smooth connection.

details

- Two tapered tubulations that fit tightly together with male/female connection, allowing for rapid joining or separation of fluid paths
- Available in sizes ranging from 1/4 to 5/16 in. (6.35 to 7.94 mm) and 3/8 to 7/16 in. (9.53 to 11.11 mm) to accommodate many types of fluid transfer needs

Nalgene Quick Disconnects

Cat. No.	Fits Tubing I.D. in. (mm)	No. per Pack	No. per Case
6150-0010	1/4 to 5/16 (6.35 to 7.94)	12	72
6150-0020	3/8 to 7/16 (9.53 to 11.11)	12	72

► Thermo Scientific Nalgene Valved Quick Disconnects

polypropylene, acetal sleeve; stainless steel springs; EPR seal



Nalgene™ Quick Disconnects are ideal for use in developing in-house fluid transfer systems.

The couplings feature tubulation for attachment of tubing and an internal valve that seals when the fittings are removed, maintaining the integrity of your transfer liquids.

details

- Chemically resistant polypropylene and EPDM o-ring can be gamma irradiated
- Leakproof termination of fluid paths when uncoupled
- Design promotes one-handed operation

Nalgene Valved Barbed Quick Disconnects

Cat. No.	Fits Tubing I.D., in. (mm)	No. per Pack	No. per Case
6177-0250	1/4 (6.35)	2	12
6177-0375	3/8 (9.53)	2	12

▶ Thermo Scientific Nalgene 3/4 in. Mini Hose Barb Connectors polypropylene



The Nalgene™ 3/4 in. Mini Hose Barb fitting allows easy connections of 3/4 in. sanitary fittings to flexible tubing.

Ideal for use in developing in-house fluid transfer systems requiring sanitary style connections.

details

- May be used in combination with 3/4 in. Mini Nalgene silicone gaskets and true-union clamps
- Autoclavable

Nalgene Mini Hose Barb Connectors

Cat. No.	Fits Tubing I.D., in. (mm)	No. per Pack	No. per Case
7210-0375	3/8 (9.53)	1	2
7210-0500	1/2 (12.7)	1	2

▶ Thermo Scientific Nalgene 1 in. Sanitary Hose Barb Connector polypropylene



The Nalgene™ Sanitary Hose Barb fitting supports connections between 1-inch sanitary fittings to flexible tubing.

Ideal for use in developing in-house fluid transfer systems requiring sanitary style connections.

details

- May be used in combination with Nalgene 1 in. Sanitary Silicone Gaskets and true-union clamps
- Autoclavable

Nalgene 1 in. Sanitary Hose Barb

Cat. No.	Fits Tubing I.D., in. (mm)	No. per Pack	No. per Case
7211-0500	1/2 (12.7)	1	2

► Thermo Scientific Nalgene Cylindrical Tank with Cover polypropylene



Nalgene™ PP Tanks with PP cover are autoclavable and available in a variety of sizes to meet application needs.

details

- Seamless construction for easy cleaning
- Offers excellent stress-crack resistance
- Economical alternative to stainless steel tanks
- Includes matching cover that significantly reduces evaporation and contamination

Notes: All Nalgene tanks used at elevated temperatures or with high specific-gravity liquids should be externally supported.

Caution: Plastic tanks are generally subject to more severe conditions than plastic labware; exposure is constant, stresses are greater and different classes and concentrations of chemicals are involved. Please pay special attention to chemical compatibility.

Nalgene Cylindrical Tank with Cover

Cat. No.	Capacity, gal. (L)	Nominal O.D. x H, in. (cm)	No. per Case
11200-0005	5 (19)	11 x 15 (28 x 38)	1
11200-0007	7.5 (28)	12 x 18 (30 x 46)	1
11200-0010	10 (38)	13 x 20 (33 x 51)	1
11200-0015	15 (57)	14 x 28 (36 x 71)	1
11200-0030	30 (113)	18 x 30 (46 x 76)	1
11200-0055	55 (208)	22 x 36 (56 x 91)	1
11200-0100	100 (378)	28 x 44 (71 x 112)	1

► Thermo Scientific Nalgene Lightweight Graduated Cylindrical Tank with Cover linear low density polyethylene



Nalgene™ Lightweight Tanks are an economical solution for less rigorous applications.

details

- Seamless construction for easy cleaning
- Offers excellent stress-crack resistance
- Economical alternative to stainless steel tanks
- Includes matching cover that significantly reduces evaporation and contamination

Notes: All Nalgene tanks used at elevated temperatures or with high specific-gravity liquids should be externally supported.

Caution: Plastic tanks are generally subject to more severe conditions than plastic labware; exposure is constant, stresses are greater and different classes and concentrations of chemicals are involved. Please pay special attention to chemical compatibility.

Nalgene Lightweight Graduated Cylindrical Tank with Cover

Cat. No.	Capacity, gal. (L)	Nominal O.D. x H, in. (cm)	No. per Case
54100-0005	5 (19)	11 x 15 (28 x 38)	1
54100-0007	7.5 (28)	12 x 18 (30 x 46)	1
54100-0010	10 (38)	13 x 20 (33 x 51)	1
54100-0015	15 (57)	14 x 28 (36 x 71)	1
54100-0030	30 (113)	18 x 30 (46 x 76)	1
54100-0055	55 (208)	22 x 36 (56 x 91)	1

► Thermo Scientific Nalgene Lightweight Cylindrical Tank with Cover and Spigot linear low density polyethylene



Nalgene™ Lightweight LLDPE Cylindrical Tanks with installed spigots are an economical solution for less rigorous applications.

These tanks offer the same characteristics as Nalgene 54100 tank series with a spigot installed for dispensing.

details

- Seamless construction for easy cleaning
- Offers excellent stress-crack resistance
- Economical alternative to stainless steel tanks
- Includes matching cover that significantly reduces evaporation and contamination
- Equipped with Nalgene Needle Spigot (Cat. No. 96423) for dispensing

Compatible products: Nalgene Spigot for Storage Tanks (Cat. No. 6421-0010).

Notes: All Nalgene tanks used at elevated temperatures or with high specific-gravity liquids should be externally supported.

Caution: Plastic tanks are generally subject to more severe conditions than plastic labware; exposure is constant, stresses are greater and different classes and concentrations of chemicals are involved. Please pay special attention to chemical compatibility.

Nalgene Lightweight Cylindrical Tank with Cover and Spigot

Cat. No.	Capacity, gal. (L)	Nominal O.D. x H, in. (cm)	No. per Case
54102-0005	5 (19)	11 x 15 (28 x 38)	1
54102-0007	7.5 (28)	12 x 18 (30 x 46)	1
54102-0010	10 (38)	13 x 20 (33 x 51)	1
54102-0015	15 (57)	14 x 28 (36 x 71)	1
54102-0030	30 (113)	18 x 30 (46 x 76)	1
54102-0055	55 (208)	22 x 36 (56 x 91)	1

► Thermo Scientific Nalgene Heavy Duty Cylindrical Tanks with Cover

linear low density polyethylene



Nalgene™ Heavy Duty LLDPE Tanks are rigid, seamless tanks offered in a variety of sizes to meet your application needs.

details

- Features rigid walls for maximum strength and durability
- Molded of LLDPE offering increased chemical and temperature resistance
- Includes matching cover that significantly reduces evaporation and contamination

Compatible products: Nalgene Tank Liners: Cat. No. 343050 series.

Notes: All Nalgene tanks used at elevated temperatures or with high specific-gravity liquids should be externally supported.

Caution: Plastic tanks are generally subject to more severe conditions than plastic labware; exposure is constant, stresses are greater and different classes and concentrations of chemicals are involved. Please pay special attention to chemical compatibility.

Nalgene Heavy Duty Cylindrical Tanks with Cover

Cat. No.	Capacity, gal. (L)	Nominal O.D. x H, in. (cm)	No. per Case
11100-0005	5 (19)	11 x 15 (28 x 38)	1
11100-0007	7.5 (28)	12 x 18 (32 x 46)	1
11100-0010	10 (38)	13 x 20 (33 x 51)	1
11100-0015	15 (57)	14 x 28 (36 x 71)	1
11100-0030	30 (113)	19 x 30 (48 x 76)	1
11100-0055	55 (208)	22 x 36 (56 x 91)	1
11100-0080	80 (303)	24 x 48 (61 x 122)	1
11100-0100	100 (378)	28 x 44 (71 x 112)	1
11100-0150	150 (568)	32 x 49 (81 x 124)	1
11100-0200	200 (757)	37 x 51 (94 x 130)	1

► Thermo Scientific Nalgene Heavy Duty Cylindrical Tanks with Spigot linear low density polyethylene



Nalgene™ Heavy Duty LLDPE Tanks with a needle-type spigot for easy dispensing.

details

- Factory-installed spigot accepts 5/8 in. I.D. tubing
- Features rigid walls for maximum strength and durability
- Seamless construction for easy cleaning
- Molded of LLDPE offering increased chemical and temperature resistance
- Includes matching cover that significantly reduces evaporation and contamination

Compatible products: Nalgene Spigot for Cylindrical Tanks
(Cat. No. 6421-0010).

Notes: All Nalgene tanks used at elevated temperatures or with high specific-gravity liquids should be externally supported.

Caution: Plastic tanks are generally subject to more severe conditions than plastic labware; exposure is constant, stresses are greater and different classes and concentrations of chemicals are involved. Please pay special attention to chemical compatibility.

Nalgene Heavy Duty Cylindrical Tanks with Spigot

Cat. No.	Capacity, gal. (L)	Nominal O.D. x H, in. (cm)	No. per Case
11102-0005	5 (19)	11 x 15 (28 x 38)	1
11102-0007	7.5 (28)	12 x 18 (30 x 46)	1
11102-0010	10 (38)	13 x 20 (33 x 51)	1
11102-0015	15 (57)	14 x 28 (36 x 71)	1
11102-0030	30 (113)	19 x 30 (48 x 76)	1
11102-0055	55 (208)	22 x 36 (56 x 91)	1

► Thermo Scientific Nalgene Tank Liners

coex polyethylene film



Nalgene™ Coex Polyethylene Film Tank Liners feature an open-bag, flat-bottom design to enhance your mixing capabilities.

Ideal for single-use, biopharmaceutical and diagnostic reagent fluid processing using rigid Nalgene cylindrical plastic tanks. Available in sizes ranging from 5 gal. to 200 gal. (19 L to 757 L).

details

- Designed specifically to fit Nalgene cylindrical tanks from 5 gal. to 200 gal. (19 L to 787 L)
- Gamma irradiated, non-cytotoxic and certified non-pyrogenic
- Coex polyethylene film is free of animal-derived components

Nalgene Tank Liners

Cat. No.	Capacity, gal (L)	Fits Nalgene Tank Cat. Nos.	No. per Pack	No. per Case
343050-0005	5 (19)	11100-0005 11200-0005 54100-0005	1	10
343050-0007	7.5 (28)	11100-0007 11200-0007 54100-0007	1	10
343050-0010	10 (38)	11100-0010 11200-0010 54100-0010	1	10
343050-0015	15 (57)	11100-0015 11200-0015 54100-0015	1	10
343050-0030	30 (113)	11100-0030 11200-0030 54100-0030	1	10
343050-0055	55 (208)	11100-0055 11200-0030 54100-0055	1	10
343050-0080	80 (303)	11100-0080	1	10
343050-0100	100 (378)	11100-0100	1	10
343050-0150	150 (568)	11100-0150	1	10
343050-0200	200 (757)	11100-0200	1	10

► Thermo Scientific Nalgene Rectangular Tank with Cover polypropylene



Nalgene™ Rectangular PP Tanks with PP Cover are autoclavable, available in a variety of sizes to meet your application needs.

details

- Seamless construction for easy cleaning
- Suitable for use with many organic chemicals
- Offers excellent stress-crack resistance
- Includes matching cover that significantly reduces evaporation and contamination

Nalgene Rectangular Tank with Cover

Cat. No.	Nominal Capacity, gal. (L)	Nominal L x W x H, in. (cm)	No. per Case
14200-0002	2 (8)	8 x 8 x 8 (20 x 20 x 20)	1
14200-0005	5 (20)	10 x 10 x 14 (25 x 25 x 36)	1
14200-0010	8 (30)	12 x 12 x 12 (30 x 30 x 30)	1
14200-0015	10 (38)	18 x 12 x 12 (46 x 30 x 30)	1
14200-0020	13 (50)	24 x 12 x 12 (61 x 30 x 30)	1
14200-0045	32 (120)	24 x 18 x 18 (61 x 45 x 45)	1

► Thermo Scientific Nalgene Heavy Duty Rectangular Tank with Cover linear low density polyethylene



Nalgene™ Heavy Duty LLDPE Rectangular Tanks are versatile, economical alternatives to stainless steel tanks.

details

- Seamless construction for easy cleaning
- Stepped flange provides drip containment and grip for lifting
- Includes matching cover that significantly reduces evaporation and contamination
- Molded of LLDPE offering increased chemical and temperature resistance

Notes: All Nalgene tanks used at elevated temperatures or with high specific-gravity liquids should be externally supported.

Caution: Plastic tanks are generally subject to more severe conditions than plastic labware; exposure is constant, stresses are greater and different classes and concentrations of chemicals are involved. Please pay special attention to chemical compatibility.

Nalgene Heavy Duty Rectangular Tank with Cover

Cat. No.	Nominal Capacity, gal. (L)	Nominal L x W x H, in. (cm)	No. per Case
14100-0002	2 (8)	8 x 8 x 8 (20 x 20 x 20)	1
14100-0005	5 (20)	10 x 10 x 14 (25 x 25 x 36)	1
14100-0010	8 (30)	12 x 12 x 12 (30 x 30 x 30)	1
14100-0015	10 (38)	18 x 12 x 12 (46 x 30 x 30)	1
14100-0020	13 (50)	24 x 12 x 12 (61 x 30 x 30)	1
14100-0040	16 (60)	18 x 12 x 18 (46 x 30 x 45)	1
14100-0045	32 (120)	24 x 18 x 18 (61 x 46 x 46)	1
14100-0065	40 (160)	24 x 18 x 24 (61 x 46 x 60)	1

▶ Thermo Scientific Nalgene Closed-Dome Tanks polypropylene



Nalgene™ Closed Dome PP Tanks with white PP closure are an excellent choice for reagent storage, aseptic mixing and dispensing.

Autoclavable and offered in a variety of sizes to meet application needs.

details

- Designed for use as a closed containment system
- Includes 150 mm gasketed screw closure, greatly reducing evaporation and contamination
- Domed bottoms offer good drainage
- Mounting flats accept bulkhead fittings up to 2 in.
- Graduated in liters and gallons

Compliance: Comply with FDA Reg. 177.1520 and USP Class VI.

Nalgene Closed-Dome Tanks

Cat. No.	Capacity, gal. (L)	Nominal O.D. x H*, in. (cm)	No. per Case
2650-0020	20 (76)	17 x 32 (42 x 79)	1
2650-0030	30 (114)	18 x 39 (47 x 99)	1
2650-0055	55 (210)	22 x 44 (57 x 112)	1
2650-0100	100 (380)	29 x 52 (72 x 132)	1

* Height measurement includes closure.

▶ Thermo Scientific Nalgene Closed-Dome Tank Closure with Mixer Support Assembly



Nalgene™ Closed-Dome Tank Closure with Mixed Support Assembly is for use with all sizes of Nalgene Closed-Dome Tanks.

Unique sanitary flange assembly allows overhead mixing in a closed system.

details

- 6 in. (15.2 cm) PP screw closure with a 2 in. (5.1 cm) sanitary ferrule welded in the center
- 2 in. (5.1 cm) silicone gasket and a PDVF True Union clamp
- Autoclavable
- Mixer not included

Compatible Products: Nalgene Closed-Dome Tanks (Cat. No. series 2650).

Nalgene Closed-Dome Bio Tank Closure with Mixer Support Assembly

Cat. No.	Closure Size, mm (in.)	Material	No. per Pack	No. per Case
2651-0200	15.2 (6)	polypropylene, PVDF, silicone	1	1

► Thermo Scientific Nalgene Spigots for Storage Tanks



Nalgene™ Spigots for Storage Tanks are used for safe and efficient liquid dispensing.

For use only with Nalgene tanks up to 100 gal. with factory installed threaded boss.

details

- Includes two PTFE o-rings that provide positive seal

Notes: Make sure container and spigot have compatible chemical resistance before installing.

Nalgene Spigots for Storage Tanks

Cat. No.	Fitting	No. per Pack	No. per Case
Polypropylene			
6421-0010	1.1/2 in. to 12 female screw thread	12	12
Low-density polyethylene			
6420-0750	19 mm NPT male thread	6	6
6420-0500	12.7 mm NPT male thread	6	6

► Thermo Scientific Nalgene Centrifuge Bottles

polypropylene copolymer with polypropylene closures



Nalgene™ Centrifuge Bottles are ideal for large-volume cell harvesting, pelleting and protein purification.

The perfect fit with Thermo Scientific Fiberlite carbon fiber rotors. Molded of rigid and robust polypropylene copolymer, these translucent bottles are autoclavable and have excellent chemical resistance properties.

details

- For low- to moderate-speed centrifugation of biological and chemical samples
- For proper performance, bottles must be filled to at least 80% of total capacity, except for 3120-9500 which must not be filled more than 75% of total capacity
- Polypropylene sealing caps assemblies available for 250 mL (DS3131-0038) and 1000 mL (DS3132-0063) sizes for added leakproof† assurance at higher speeds and fill volumes

Notes: When spinning 250 mL bottle in Sorvall GSA rotor, use of the Nalgene centrifuge bottle adapter (DS3125-0250) is required.

Nalgene Centrifuge Bottles

Cat. No.	Nominal Capacity, mL	Max Force, xg	No. per Pack	No. per Case
3120-0250	250	13,200†	4	36
3120-0500	500	4,800	4	24
3120-9500	500	13,700	4	24
3120-1000	1000	7,100	4	16
3120-1010‡	1000	7,100	4	16

† Up to 27,500 xg with sealing cap assembly

‡ For use with IEC rotors

► Thermo Scientific Nalgene Centrifuge Bottles with Sealing Closure

polypropylene copolymer, polypropylene closure



Nalgene™ Centrifuge Bottles are ideal for large-volume cell harvesting, pelleting and protein purification.

The perfect fit with Thermo Scientific Fiberlite carbon fiber rotors. Molded of rigid and robust PPCO, these translucent bottles are autoclavable and have excellent chemical resistance properties.

details

- For low- to moderate-speed centrifugation of biological and chemical samples
- Bottle includes PP sealing cap assembly with silicone gasket for added leakproof assurance at maximum speeds or when spinning hazardous materials
- For proper performance bottles must be filled to 80% of total capacity

Notes: When spinning 250 mL bottle in a Sorvall™ GSA rotor, use of the Nalgene centrifuge bottle adapter (DS3125-0250) is required.

Nalgene Centrifuge Bottles with Sealing Closure

Cat. No.	Nominal Capacity, mL	Max Force, xg	No. per Pack	No. per Case
3141-0250	250	27,500	4	36
3141-0500	450	13,700	4	24



► Thermo Scientific Nalgene Centrifuge Bottles

polycarbonate with polypropylene closures



Nalgene™ Centrifuge Bottles are ideal for large-volume cell harvesting, pelleting and protein purification.

The perfect fit with Thermo Scientific Fiberlite carbon fiber rotors. Molded of translucent polycarbonate, these translucent bottles are autoclavable and have excellent mechanical strength properties.

details

- For low-speed centrifugation of biological and chemical samples
- Molded of translucent polycarbonate for easy visualization of samples
- For added leakproof[®] assurance at maximum speeds or when spinning hazardous materials, use with PP sealing caps assemblies; available for 250 mL (Cat. No. DS3131-0038) and 1000 mL (Cat. No. DS3132-0063) sizes
- For proper performance, bottles must be filled to at least 80% of total capacity

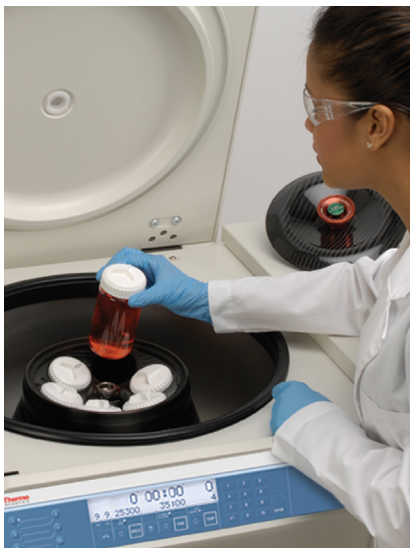
Notes: When spinning 250 mL bottle in Sorvall GSA rotor, use of the Nalgene centrifuge bottle adapter (Cat. No. DS3125-0250) is required.

Nalgene Centrifuge Bottles

Cat. No.	Nominal Capacity, mL	Max Force, xg	No. per Pack	No. per Case
3122-0250	250	27,500	4	36
3122-0500	500	13,700	4	24
3122-1000	1000	7100	4	16
3122-1010	1000	7100	4	16



► Thermo Scientific Nalgene Centrifuge Bottles with Sealing Closure polycarbonate with polypropylene closures



Nalgene™ Centrifuge Bottles are ideal for large-volume cell harvesting, pelleting and protein purification.

The perfect fit with Thermo Scientific Fiberlite carbon fiber rotors. Molded of transparent PC, these translucent bottles are autoclavable and have excellent mechanical strength properties.

details

- For low- to moderate-speed centrifugation of biological and chemical samples
- Molded clear PC for easy visualization of samples
- PP sealing cap closure with silicone gasket, for added leakproof[†] assurance at maximum speeds or when spinning hazardous materials
- For proper performance bottles must be filled to 80% of total capacity

Notes: When spinning 250 mL bottle in a Sorvall™ GSA rotor, use of the Nalgene centrifuge bottle adapter (DS3125-0250) is required.

Nalgene Centrifuge Bottles with Sealing Closure

Cat. No.	Nominal Capacity, mL	Max Force, xg	No. per Pack	No. per Case
3140-0250	250	27,500	4	36
3140-0500	450	13,700	4	24



▶ Thermo Scientific Nalgene Teflon® FEP Centrifuge Bottle

Teflon® fluorinated ethylene-propylene, Tefzel™ ethylene-tetrafluoroethylene closure



Nalgene™ Teflon® FEP Centrifuge Bottles are ideal for low-speed, lipid and phenol extractions, digestions and precipitations.

The perfect fit with Thermo Scientific Fiberlite carbon fiber rotors. Molded of autoclavable, translucent FEP, these bottles resist most acids, bases and organic solvents.

details

- Use in temperatures from -100°C to +150°C
- FEP provides excellent chemical resistance, ideal for large-volume extraction, digestion and precipitation procedures requiring the use of aggressive chemicals
- For proper performance, must be filled to 100% of total capacity
- For added leakproof[†] assurance at maximum speeds or when spinning hazardous materials use with PP sealing caps assemblies (DS3131-0038)

Notes: When spinning 250 mL bottle in a Sorvall™ GSA rotor, use of the Nalgene centrifuge bottle adapter (Cat. No. DS3125-0250) is required.

Teflon® is a registered trademark of DuPont used under license by Nalge Nunc International Corp.

Nalgene Teflon® FEP Centrifuge Bottle

Cat. No.	Nominal Capacity, mL	Max Force, xg	No. per Pack	No. per Case
3127-0250	250	4,000	1	6

▶ Thermo Scientific Nalgene Centrifuge Bottles

high-density polyethylene with polypropylene closures



Nalgene™ Centrifuge Bottles are ideal for large-volume cell harvesting, pelleting and protein purification requiring refrigerated temperatures.

The perfect fit with Thermo Scientific Fiberlite carbon fiber rotors. Molded of rigid and robust HDPE, these translucent bottles have excellent chemical resistance properties and are rated for temperatures as low as -100°C.

details

- For low-speed centrifugation of biological and chemical samples
- Excellent for use in refrigerated centrifuges
- Rated for use in temperatures as low as -100°C
- Rated for forces up to 8,000 ×g
- For proper performance bottles, must be filled to at least 80% of total capacity

Notes: When spinning 250 mL bottle in a Sorvall™ GSA rotor, use of the Nalgene centrifuge bottle adapter (Cat. No. DS3125-0250) is required

Nalgene Centrifuge Bottles

Cat. No.	Nominal Capacity, mL	Max Force, xg	No. per Pack	No. per Case
3121-0250	250	8,000	6	36

► Thermo Scientific Nalgene Centrifuge Bottle Adapter

low density polyethylene



Nalgene™ Centrifuge Bottle Adapter provides support to all Nalgene 250 mL bottles for proper fit in Sorvall GSA rotors.

details

- Molded of white, low-density polyethylene
- For use with Nalgene centrifuge bottles: Cat. Nos. 3120-0250, 3121-0250, 3127-0250, 3140-0250 and 3141-0250

Nalgene Centrifuge Bottle Adapter

Cat. No.	Description	No. per Pack	No. per Case
DS3125-0250	Centrifuge Bottle Adapter for 250 mL bottles	6	6

► Thermo Scientific Nalgene Sealing Cap Assembly

polypropylene closure with silicone gasket



Nalgene™ Sealing Cap Assemblies ensure leakproof service of Nalgene centrifuge bottles at their recommended maximum rated speeds.

details

- PP closures with silicone gasket
- Recommended for use when spinning hazardous materials

Nalgene Sealing Cap Assembly

Cat. No.	Closure Size, mm	Fits Cat. No.	No. per Case
DS3132-0058	58	3140-0250, 3141-0250	2
DS3132-0063	63	3120-1000, 3120-1010, 3122-1000, 3122-1010, 3140-0500, 3141-0500	2

▶ Thermo Scientific Nalgene Spherical-Bottom Centrifuge Bottle

polycarbonate, polypropylene closure



Nalgene™ Spherical-Bottom Centrifuge Bottles are ideal for large-volume cell harvesting, pelleting and protein purification.

The perfect fit with Thermo Scientific Fiberlite carbon fiber rotors. Molded of transparent PC, these translucent bottles are autoclavable and have excellent mechanical strength properties.

details

- For low- to moderate-speed centrifugation of biological and chemical samples
- Molded of transparent PC for easy visualization of samples
- Spherical-bottom design facilitates pellet formation and retrieval
- For proper performance, bottles must be filled to 80% of the total capacity

Notes: For use in standard rotors, the use of the Nalgene spherical-bottom adaptor Cat. No. DS3124-0010 is recommended.

Nalgene Spherical-Bottom Centrifuge Bottle

Cat. No.	Nominal Capacity, mL	Max Force, xg	No. per Pack	No. per Case
3123-0250	250	27,500	4	36

▶ Thermo Scientific Nalgene Spherical-Bottom Centrifuge Bottle Adapter

polycarbonate



Nalgene™ Spherical-Bottom Centrifuge Bottle Adapter is specifically designed to mate with Cat. No. 3123-0250 for use in standard centrifuge rotors.

details

- Molded of rigid and robust white polycarbonate for assured durability.
- Total height of Nalgene spherical-bottom centrifuge bottle with closure and adapter is 137.5 mm

Nalgene Spherical-Bottom Centrifuge Bottle Adapter

Cat. No.	Description	No. per Pack	No. per Case
DS3124-0010	Spherical-Bottom Centrifuge Bottle Adaptor	4	4

► Thermo Scientific Nalgene Conical-Bottom Centrifuge Bottle

polypropylene copolymer, polypropylene sealing closure



Nalgene™ Conical-Bottom Centrifuge Bottles are designed for pelleting applications such as cell culture harvesting and protein biochemistry, including ammonium sulfate precipitations.

Molded of rigid and robust PPCO, these translucent bottles are autoclavable and have excellent chemical resistance properties.

details

- For low- to moderate-speed centrifugation of biological and chemical samples
- Bottle includes PP sealing cap assembly with silicone gasket for added leakproof assurance at maximum speeds or when spinning hazardous materials
- Proper performance requires that bottles must be filled to 80% of the total capacity
- Autoclavable, graduated, leakproof†

Requires: Must be used with Nalgene adapter for conical-bottom centrifuge bottles (Cat. No. DS3126-0175).

Nalgene Conical-Bottom Centrifuge Bottle

Cat. No.	Nominal Capacity, mL	Max Force, xg	No. per Pack	No. per Case
3143-0175	175	27,500	4	36

► Thermo Scientific Nalgene Conical-Bottom Centrifuge Bottle

polycarbonate, polypropylene sealing closure



Nalgene™ Conical-Bottom Centrifuge bottles are designed for pelleting applications such as cell culture harvesting and protein biochemistry, including ammonium sulfate precipitations.

Molded of transparent polycarbonate, these transparent bottles are autoclavable and offer excellent mechanical strength.

details

- For low- to moderate-speed centrifugation of biological and chemical samples
- Bottle includes PP sealing cap assembly with silicone gasket for added leakproof assurance at maximum speeds or when spinning hazardous materials
- For proper performance bottles must be filled to 80% of total capacity
- Autoclavable, transparent, leakproof†, with molded-in graduations

Requires: Must be used with Nalgene adapter for conical-bottom centrifuge bottles (Cat. No. DS3126-0175).

Nalgene Conical-Bottom Centrifuge Bottle

Cat. No.	Nominal Capacity, mL	Max Force, xg	No. per Pack	No. per Case
3144-0175	175	27,500	4	36

► Thermo Scientific Nalgene Conical-Bottom Centrifuge Bottle

polystyrene, high-density polyethylene closure



Nalgene™ Sterile Conical-Bottom Centrifuge Bottles are an economical and disposable solution for low-speed, large-volume cell harvesting, pelleting and protein purification.

The perfect fit with Thermo Scientific Fiberlite carbon fiber rotors. Molded of PS, these translucent bottles are individually wrapped and ready to use.

Well suited for sterile cell culture applications. Designed for use in low-speed refrigerated or non-refrigerated centrifuges up to 5800 xg.

details

- Molded of transparent PS for easy visualization of samples
- Well suited for sterile cell culture applications
- Designed for use in low-speed refrigerated or non-refrigerated centrifuges up to 5800 xg
- Gamma-radiation sterilized, individually wrapped and ready to use
- Molded-in graduations to assist with volume measurements
- For proper performance, bottles must be filled to at least 80% of total capacity

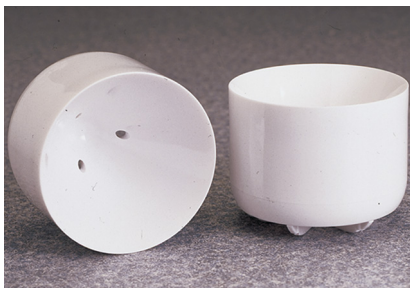
Requires: Must be used with Nalgene adapter for conical-bottom centrifuge bottles (DS3126-0175).

Nalgene Conical-Bottom Centrifuge Bottle

Cat. No.	Nominal Capacity, mL	Max Force, xg	No. per Pack	No. per Case
3145-0175	175	5800	12	48

► Thermo Scientific Nalgene Conical-Bottom Centrifuge Bottle Adapter

polycarbonate



Nalgene™ Conical-Bottom Bottle Adapter is designed for use with Cat. Nos. 3143, 3144, and 3145.

details

- Molded of rigid, robust white PC for assured durability
- Centrifugation of Nalgene Conical Bottom Centrifuge Bottles (Cat. Nos. 3143, 3144, 3145) requires this adapter

Nalgene Conical-Bottom Centrifuge Bottle Adapter

Cat. No.	Description	No. per Pack	No. per Case
DS3126-0175	Conical Bottom Centrifuge Bottle Adapter	4	4

Thermo Scientific Products –
meeting the challenges of science and industry

superspeed centrifuges

**Deliver outstanding throughput
and processing power combined with
innovation, quality and reliability.**

The Thermo Scientific Sorvall RC 6 Plus centrifuge provides exceptional processing flexibility with a full array of rotors – from lightweight and corrosion-resistant Fiberlite® carbon fiber, to swinging bucket and specialty rotors. Its advanced design ensures the highest quality results everyday, perfectly matched to your most demanding centrifugation applications in pharmaceutical, biotechnology and academic research.

SORVALL
RC 6+
Centrifuge



For more product information, go to:

www.thermoscientific.com/superspeedsolutions

► Thermo Scientific Nalgene 1 L Super Speed Centrifuge Bottles with Sealing Closure



Nalgene™ 1 L Super Speed Centrifuge Bottles with Sealing Closure are designed to boost productivity and pellet recovery in high-speed, large-volume gross separation applications.

The perfect fit to Fiberlite™ carbon fiber rotors. Molded of transparent PC and PPCO, these bottles are autoclavable and have excellent mechanical strength properties.

details

- Process a full liter in each bottle at speeds up to 15,810 xg
- Smooth inner walls reduces sheering in mammalian culture separations
- Ideal for bacterial, yeast tissue isolations and viral harvesting
- Choose PC for excellent clarity and mechanical strength
- Choose PPCO copolymer for excellent chemical resistance
- Designed to fit FiberLite™ F6S 6 x 1000Y, F8S 6 x 1000Y, and F9S 4 x 1000Y carbon fiber rotors
- Recommended operating temperature range 4° to 22°C; storage to -70°C
- Includes 3-piece sealing cap assembly, PP plug, closure and silicone gasket for added leakproof[†] assurance
- USP Class VI compliant, non-cytotoxic, autoclavable

Nalgene 1 L Super Speed Centrifuge Bottles with Sealing Closure

Cat. No.	Material	Max Force, xg	No. per Pack	No. per Case
3140-1006	Polycarbonate	15,810	6	6
3141-1006	Polypropylene copolymer	15,810	6	6



► Thermo Scientific Nalgene 2 L Bio Bottle with Sealing Closure

polypropylene copolymer, polypropylene closure with silicone gasket



Nalgene™ 2 L Bio Bottle offers a solution for the separation of large-volume harvests in a single run.

Designed for use in Thermo Scientific RC12BP Plus Centrifuges and H-12000 Swing Bucket Rotors, an exact fit ensures optimal performance. Ideal for bacterial, yeast and tissue isolations. Two-piece plug and sealing cap design promotes aseptic handling.

details

- Process up to 12 L in a single run at speeds up to 7333 xg
- Graduated, wide-mouth design simplifies decanting, re-suspensions and pellet removal
- Conical shape and smooth inner surface assures compact pellet formation
- For centrifugation operating temperatures from 4°C to 22°C and storage to 0°C
- The use of support bridge (Cat. No. 75007686) is required
- 2 L Bio Bottles must be filled to at least 80% of the total capacity for optimal performance

Includes: White PP sealing screw closure with silicone gasket for leakproof assurance.

Compliance: Meets USP VI, non-cytotoxic, non-hemolytic.

Nalgene 2 L Bio Bottle with Sealing Closure

Cat. No.	Description	Max Force, xg	No. per Pack	No. per Case
3120-2006	2 L Bio Bottle, non-sterile	7333	6	6
3120-2024	2 L Bio Bottle, sterile	7333	1	24

► Thermo Scientific Nalgene Bottle Low & High Speed Selector Guide

Cat. No.	Nominal Vol., mL	Description	Nom. Dim. Dia. x H., mm	Material	Maximum RCF (xg)		Closure Size (mm)	Closure Options Cat. No.
					4°C	22°C		
3143-0175	175	Conical wide-mouth bottle, sealing closure	61.8 x 139.4	PPCO	27,500	27,500	58	DS3132-0058
3144-0175	175	Conical wide-mouth bottle, sealing closure	61.8 x 140.5	PC	27,500	27,500	58	DS3132-0058
3145-0175	175	Conical wide-mouth bottle, closure, sterile	61.5 x 135.6	PS	5800	5800	53	712150-0530
3120-0250	250	Bottle, closure	61.8 x 125.2	PPCO	13,200 [†]	13,200 [†]	38	DS3131-0038
3122-0250	250	Bottle, closure	61.8 x 125.2	PC	27,500	27,500	38	DS3131-0038
3121-0250	250	Bottle wide-mouth, closure	61.2 x 131.6	HDPE	8000	8000	43	712150-0430
3123-0250	250	Spherical bottom bottle, closure	61.8 x 140.0	PC	27,500	27,500	38	DS3131-0038
3127-0250	250	Bottle, closure	59.9 x 126.5	FEP	4000	NR	38	DS3131-0038
3140-0250	250	Bottle wide-mouth, sealing closure	61.8 x 134.4	PC	27,500	27,500	58	DS3132-0058
3141-0250	250	Bottle wide-mouth, sealing closure	61.1 x 132.8	PPCO	27,500	27,500	58	DS3132-0058
3140-0500	450	Bottle wide-mouth, sealing closure	69.5 x 159.5	PC	13,700	13,700	63	DS3132-0063
3141-0500	450	Bottle wide-mouth, sealing closure	69.5 x 159.3	PPCO	13,700	13,700	63	DS3132-0063
3120-0500	500	Bottle, closure	73.8 x 168.9	PPCO	4800	4800	48	
3120-9500	500	Bottle, closure	69.5 x 168.9	PPCO	13,700	13,700	48	
3122-0500	500	Bottle, closure	69.5 x 168.9	PC	13,700	13,700	48	
3120-1000	1000	Bottle, closure	98.0 x 174.2	PPCO	7100	7100	63	DS3132-0063; 712150-0630
3122-1000	1000	Bottle, closure	98.1 x 177.0	PC	7100	7100	63	DS3132-0063; 712150-0630
3140-1006	1000	Bottle, sealing closure	97.5 x 195.3	PC	15,810	15,810	84.5	DS3132-BLUE
3141-1006	1000	Bottle, sealing closure	97.5 x 195.3	PPCO	15,810	15,810	84.5	
3120-1010	1000	Bottle, closure (IEC)	98.0 x 168.4	PPCO	7100	7100	63	DS3132-0063; 712150-0630
3122-1010	1000	Bottle, closure (IEC)	98.1 x 189.7	PC	7100	7100	63	DS3132-0063; 712150-0630
3120-2006	2000	2 L BioBottle, sealing closure	175.5 x 111.5 x 209.3	PPCO	7333	7333	63	713120-0063
3120-2024	2000	2 L BioBottle, sealing closure, sterile	175.5 x 111.5 x 200.2	PPCO	7333	7333	63	713120-0063